

Progress Eco S.A.

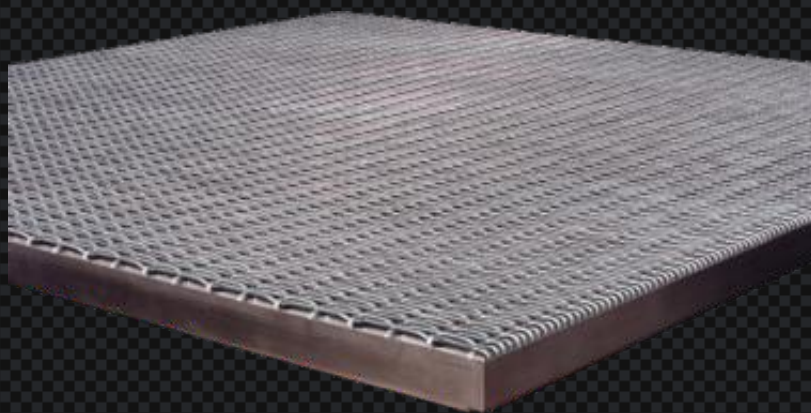
Progress
Industry Group



...to be in progress.

ASTRO
System **Pro-T24**

Metal ceilings



Progress Architectural
Steel Structures

www.progressarch.com

Progress Eco S.A. metal ceilings

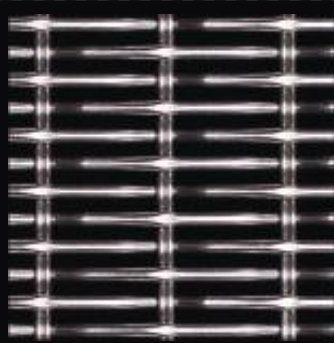
Description

Progress Steel Ceilings Systems combine advanced production technologies with unique design potential. They are modern and durable ceilings made of stainless or galvanized steel and aluminium. Panels can be assembled on standard constructions which can be visible, partially or totally hidden.

Panels are made of innovative materials and are divided into three production groups:

- ASTRO - ceilings made of woven wire mesh
- DECO - ceilings made of welded screens
- CARO - ceilings made of expanded metal sheet

Designs and specifications for the ASTRO Pro-CLIP system



Net type:	Open area	Mesh	Height	Weight	Material
VIRGO P07010	45,57%	15,5x2,0mm	3,2mm	6,87 kg	AISI 304, 316
VIRGO P07020	43,30%	15,5x2,0mm	3,5mm	7,87 kg	AISI 304, 316
VIRGO P07040	45,85%	26,5x2,0mm	3,5mm	7,45 kg	AISI 304, 316

Application: Exterior: Acid resistant AISI 316
Interior: Stainless steel AISI 304
Carbon galvanised varnished steel (RAL)



Net type:	Open area	Mesh	Height	Weight	Material
TAURUS P02010	55,92%	3,5x14,5mm	3,8mm	6,57 kg	AISI 304, 316
TAURUS P02030	63,00%	2,8x10,8mm	2,2mm	3,25 kg	AISI 304, 316
TAURUS P02040	60,00%	2,3x6,5mm	1,8mm	3,00 kg	AISI 304, 316

Application: Exterior: Acid resistant AISI 316
Interior: Stainless steel AISI 304
Carbon galvanised varnished steel (RAL)



Net type:	Open area	Mesh	Height	Weight	Material
LEO P06040	52,00%	30,0x2,5mm	4,5mm	6,87 kg	AISI 304, 316
LEO P06070	57,00%	15,5x3,0mm	3,0mm	5,47 kg	AISI 304, 316
LEO P06051	49,40%	25,0x3,5mm	4,8mm	3,55 kg	Aluminium

Application: Exterior: Acid resistant AISI 316
Interior: Stainless steel AISI 304
Carbon galvanised varnished steel (RAL)
Aluminium



Net type:	Open area	Mesh	Height	Weight	Material
ARIES P01020	44,40%	2,0x2,0mm	1,8mm	4,52 kg	AISI 304, 316
ARIES P01060	51,00%	4,0x4,0mm	3,8mm	6,20 kg	AISI 304, 316

Application: Exterior: Acid resistant AISI 316
Interior: Stainless steel AISI 304
Carbon galvanised varnished steel (RAL)

RAL colour palette

Basic colours in accordance with standard RAL colour palette (RAL 9006, 9007, 9010, 9016, 9002, 9004, 7011, 5017, 3020, 3009).

Other colours from RAL palette available on request.

RAL 9006	RAL 9007	RAL 9010	RAL 9016	RAL 9002
RAL 9004	RAL 7011	RAL 5017	RAL 3020	RAL 3009

Presented colours may vary.
While choosing a colour it is advised to choose it from an original RAL palette.

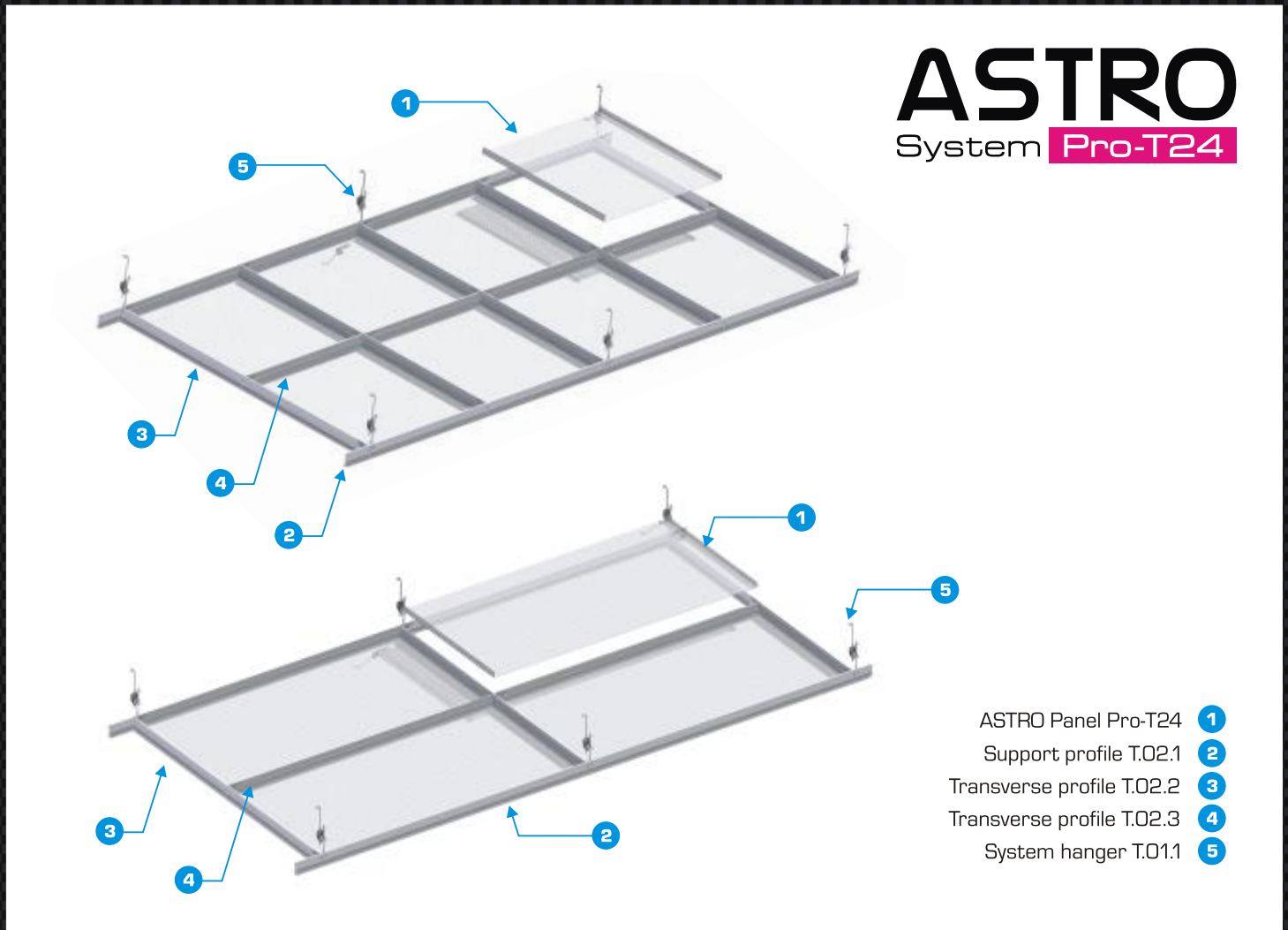
ASTRO Line system Pro-T24

Standard panels and dimensions

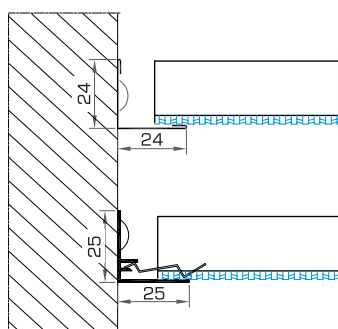
Panel format*	Slot parallel to the edge
600 x 1200 mm	600 mm
600 x 600 mm	600 mm

*other dimensions available on special order

Pro-T-24 fixing system

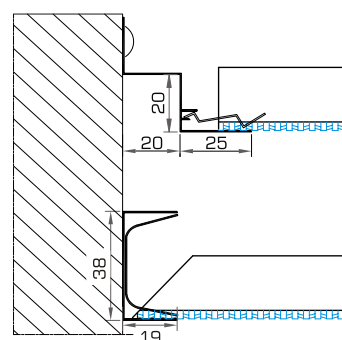


Sidewall solutions



Edge bar
LB.01 + SM.01

Edge bar + spring
LB.02 + SM.01



Edge bar + spring
LB.03 + SM.01

Edge bar + spring
LB.04 + SC.01

Norms and certificates



Progress Metal Ceiling Systems have CE certificate in accordance with the norm PN-EN 13964:2005. The quality of our products is based on many years of experience and knowledge of our employees. We apply a controlling system which is in accordance with procedures and instructions of the holding certificate of Quality Management System ISO 9001:2008 Metal ceiling panels are classified as non-inflammable and non-spreading fire. They're classified as an A1 class regarding fire reaction

Medium usage of ceiling elements

Element	Label	Number of panels required	600X600	600X1200
ASTRO Panel Pro-T24	-	pc./m ²	2,8	1,4
Transverse profile	T.02.2	lm	1,7	1,7
Transverse profile	T.02.3	lm	0.84	-
Support profile	T.02.1	lm	0.84	0,84
System hanger	T.01.1	pc.	0,70	0,70

Usage and maintenance

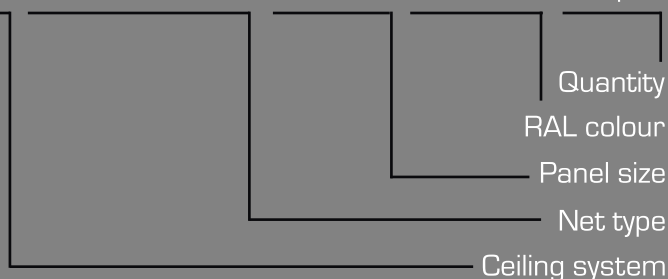
Progress Metal Ceiling Systems are Perfect for both public and commercial interiors such as:

- shopping centres,
- airports
- railway and bus stations
- schools, universities and libraries
- museums and galleries
- offices and exhibition halls

Due to high quality of used materials and the possibility of cleaning, they are perfect for very humid or extensively used and polluted places. The use of proper inserts in some solutions fulfil the acoustic demands as for sound isolation and absorption.

Order description

ASTRO Pro-T24 VIRGO Z10080 600x600 RAL 3009 1000pc.



Ceiling panels are packed in cartons or wrapped in bubble packaging. Remaining elements are packed according to the specification. Transportation costs are not included in prices of panels.

General applications

Metal Ceiling Systems allow for easy installation of lighting fixture and other elements of installation [eg.: speakers, diffusers, fixtures] provided that they're suspended under main ceiling.



Lightning and sound system



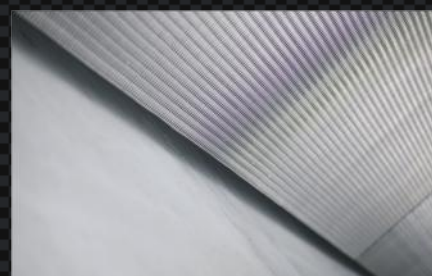
Communication



Air-conditioning and ventilation



Combinations



Perimeter solution

www.progressarch.com



Progress Eco S.A.
Dobrow 7
28-142 Tuczępy, PL
tel: +48 15 864 62 70
fax: +48 15 864 62 78
www.progressarch.com
arch@progressarch.com

Office in Poznań
ul.Św. Michała 65
61-005 Poznań, PL
tel/fax: +48 61 873 33 01
tel/fax: +48 61 873 33 30
www.progressarch.com
poznan@progressarch.com

Office in Kielce
ul.Trzuskawicka 16
25-801 Kielce, Poland
tel: +48 41 346 50 06
fax: +48 41 346 50 08
www.progressarch.com
arch@progressarch.com

...to be in progress.

