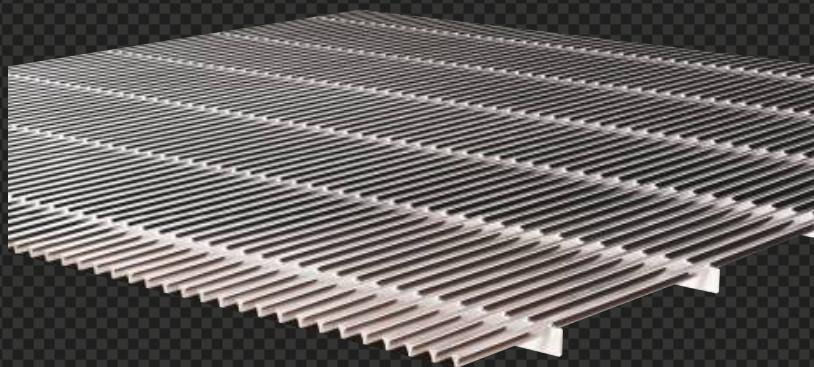




Time for Progress...

DECO
System **Pro-CLIP**

Metal ceilings



Progress Eco S.A. metal ceilings

Description

Progress Steel Ceilings Systems combine advanced production technologies with unique design potential. They are modern and durable ceilings made of stainless or galvanized steel and aluminium. Panels can be assembled on standard constructions which can be visible, partially or totally hidden.

Panels are made of innovative materials and are divided into three production groups:

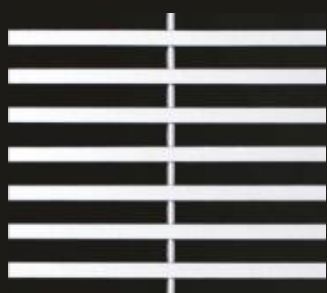
- ASTRO - ceilings made of woven wire mesh
- DECO - ceilings made of welded screens
- CARO - ceilings made of expanded metal sheet

Designs and specifications for the DECO Pro-CLIP system



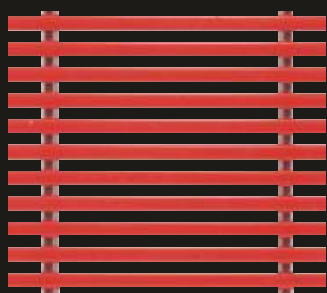
Net type:	Open area	Mesh	Height	Weight	Material
RADIUS Z07065	65,00%	6,50mm	13,00mm	7,20 kg	AISI 304, 316
RADIUS Z07115	76,60%	11,50mm	13,00mm	5,25 kg	AISI 304, 316
RADIUS Z07165	82,50%	16,50mm	13,00mm	4,31 kg	AISI 304, 316

Application: Exterior: Acid resistant AISI 316
Interior: Stainless steel AISI 304



Net type:	Open area	Mesh	Height	Weight	New! Material
RADIUS Z10080	64,00%	8,00mm	12,00mm	8,80 kg	Pro-ZINAL
RADIUS Z10105	70,00%	10,50mm	12,00mm	7,66 kg	Pro-ZINAL
RADIUS Z10155	77,00%	15,50mm	12,00mm	6,10 kg	Pro-ZINAL

Application: Innovative material with increased corrosion resistance for exterior use.



Net type:	Open area	Mesh	Height	Weight	Material
RADIUS Z08075	60,00%	7,50mm	13,50mm	9,50 kg	Stal węglowa
RADIUS Z08100	66,00%	10,00mm	13,50mm	8,20 kg	Stal węglowa
RADIUS Z08150	75,00%	15,00mm	13,50mm	6,60 kg	Stal węglowa

Application: Na zewnątrz: Carbon galvanised steel + RAL
Wewnątrz: Carbon steel + RAL

RAL colour palette

Basic colours in accordance with standard RAL colour palette (RAL 9006, 9007, 9010, 9016, 9002, 9004, 7011, 5017, 3020, 3009).

Other colours from RAL palette available on request.

RAL 9006	RAL 9007	RAL 9010	RAL 9016	RAL 9002
RAL 9004	RAL 7011	RAL 5017	RAL 3020	RAL 3009

Presented colours may vary.
While choosing a colour it is advised to choose it from an original RAL palette.

DECO Line system Pro-CLIP

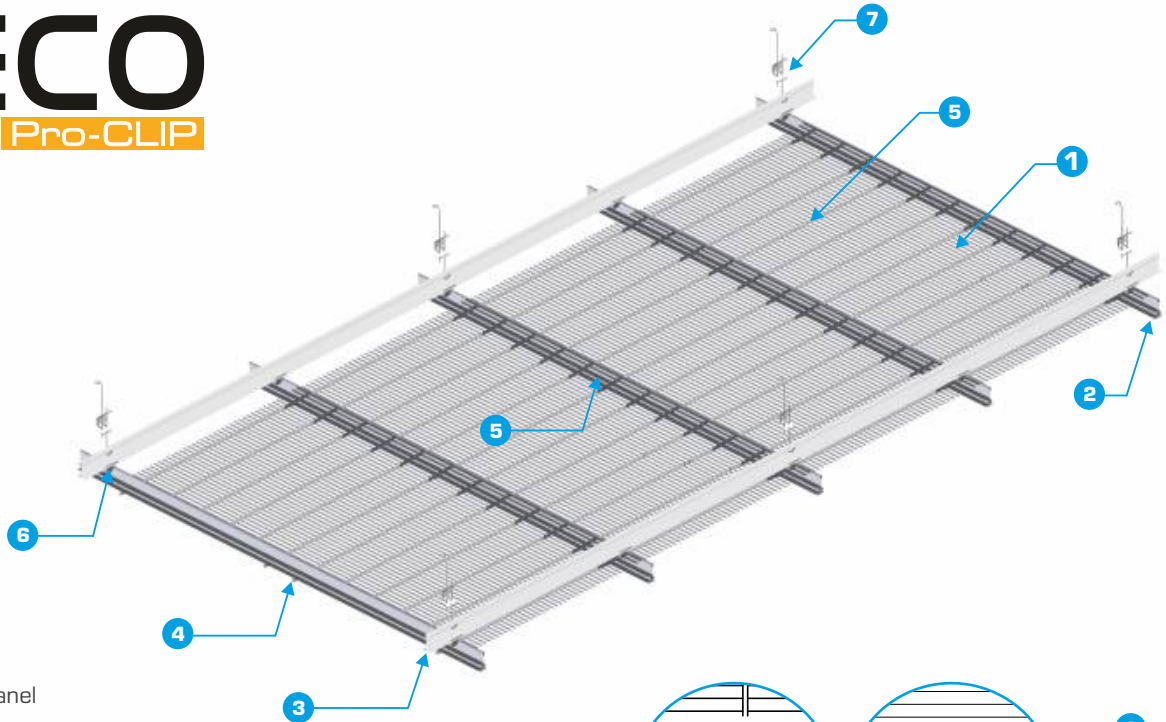
Standard panels and dimensions

Panel length *	Panel format
1200 mm	1200x1200 mm, 1200x900 mm, 1200x600 mm
900 mm	900x1200 mm,
600 mm	600x600 mm

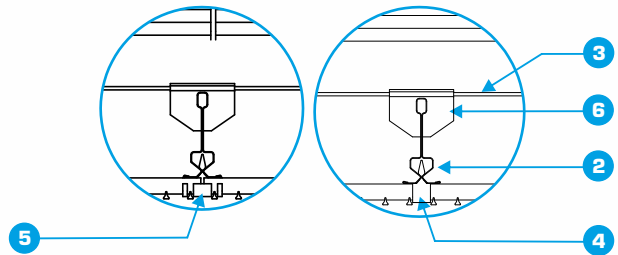
*Other dimensions available on special order
Gap's direction according to project requirements

Pro-CLIP fixing system

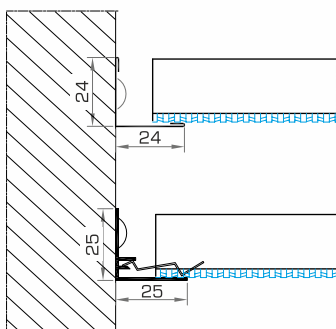
DECO
System **Pro-CLIP**



- 1 DECO Panel
- 2 Transverse profile C.02.2
- 3 Support profile C.02.1
- 4 Side CLIP C.04.1
- 5 Middle CLIP C.04.2
- 6 Connector CLIP C.01.2
- 7 System hanger C.01.1

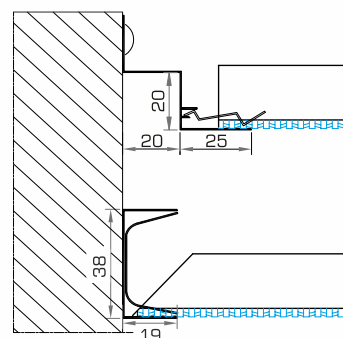


Sidewall solutions



Edge bar
LB.01 + SM.01

Edge bar + spring
LB.02 + SM.01



Edge bar + spring
LB.03 + SM.01

Edge bar + spring
LB.04 + SC.01

Norms and certificates



Progress Metal Ceiling Systems have CE certificate in accordance with the norm PN-EN 13964:2005. The quality of our products is based on many years of experience and knowledge of our employees. We apply a controlling system which is in accordance with procedures and instructions of the holding certificate of Quality Management System ISO 9001:2008. Metal ceiling panels are classified as non-inflammable and non-spreading fire. They're classified as an A1 class regarding fire reaction.

Medium usage of ceiling elements

Element	Label	Number of panels required	600 X600	600 X1200	1200 X1200	900 X1200
DECO Panel	-	ps./m ²	2,80	1,40	0,70	0,93
Transverse profile	C.02.2	lm	1,70	1,70	1,70	1,70
Support profile	C.02.1	lm	0,84	0,84	0,84	0,84
Side CLIP	C.04.1	pc.	3,00	5,00	6,00	6,00
Middle CLIP	C.04.2	pc.	3,00	3,00	3,00	3,00
Connector CLIP	C.01.2	pc.	1,40	1,40	1,40	1,40
Lifting sling	C.01.1	pc.	0,70	0,70	0,70	0,70

Usage and maintenance

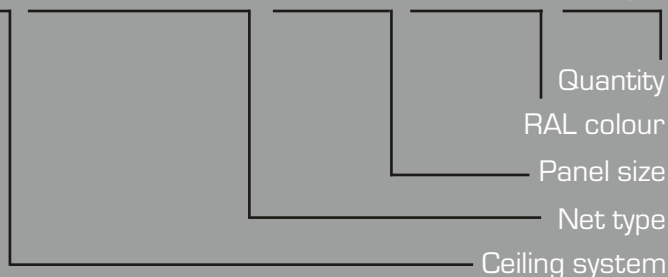
Progress Metal Ceiling Systems are Perfect for both public and commercial interiors such as:

- shopping centres,
- airports
- railway and bus stations
- schools, universities and libraries
- museums and galleries
- offices and exhibition halls

Due to high quality of used materials and the possibility of cleaning, they are perfect for very humid or extensively used and polluted places. The use of proper inserts in some solutions fulfil the acoustic demands as for sound isolation and absorption.

Order description

DECO Pro-CLIP RADIUS Z10080 600x600 RAL 3009 1000pc.



Ceiling panels are packed in cartons or wrapped in bubble packaging. Remaining elements are packed according to the specification. Transportation costs are not included in prices of panels.

General applications

Metal Ceiling Systems allow for easy installation of lighting fixture and other elements of installation [eg.: speakers, diffusers, fixtures] provided that they're suspended under main ceiling.



Lighting and sound system



Communication



Air-conditioning and ventilation



Combinations



Perimeter solution

www.progressarch.com



Progress Eco S.A.
Dobrów 7
28-142 Tuczępy, PL
tel: +48 15 864 62 70
fax: +48 15 864 62 78
www.progressarch.com
arch@progressarch.com

Office in Poznań
ul. Św. Michała 65
61-005 Poznań, PL
tel/fax: +48 61 873 33 01
tel/fax: +48 61 873 33 30
www.progressarch.com
poznan@progressarch.com

Office in Kielce
ul. Trzuskawicka 16
25-801 Kielce, Poland
tel: +48 41 346 50 06
fax: +48 41 346 50 08
www.progressarch.com
arch@progressarch.com

Time for Progress...

