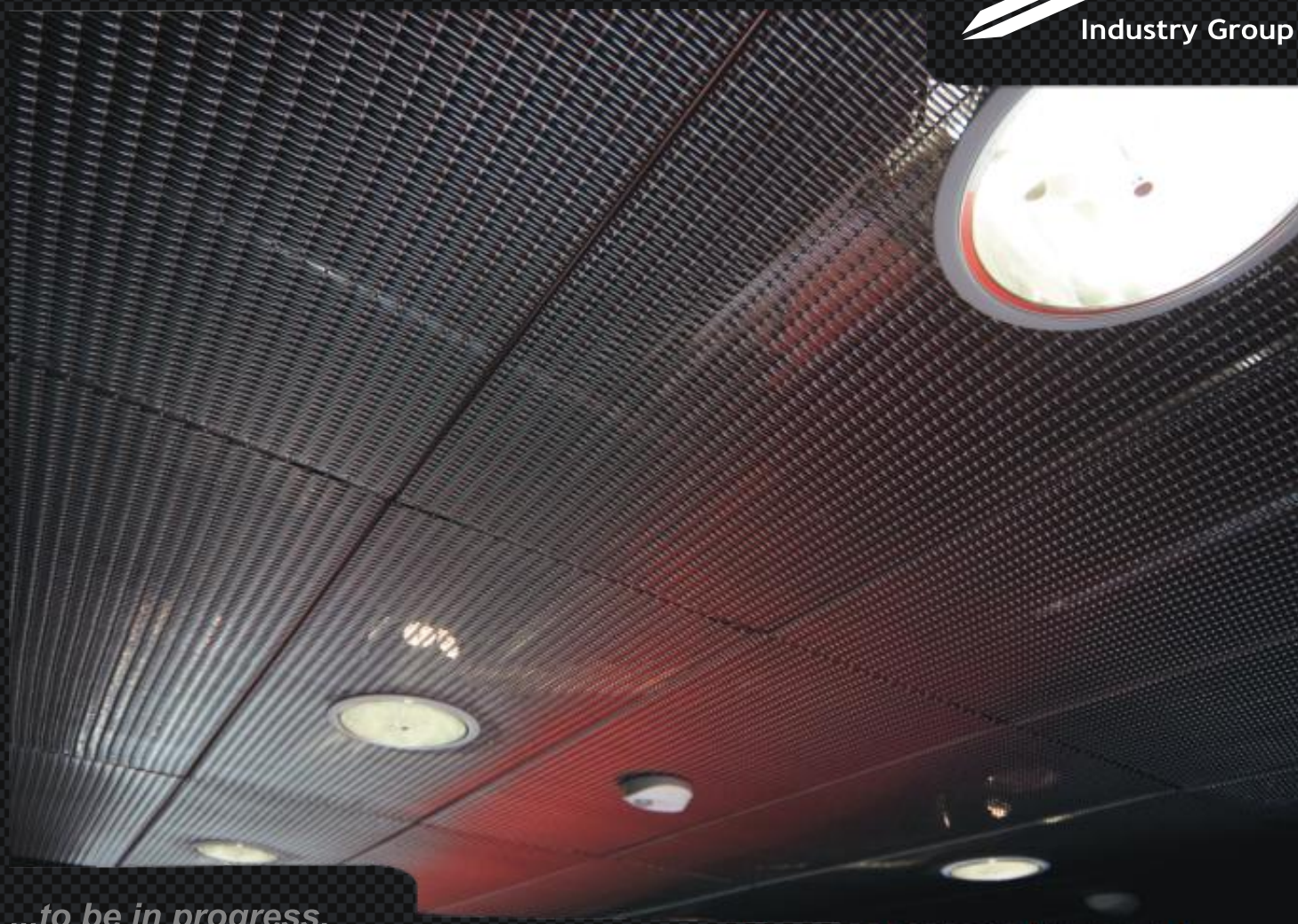


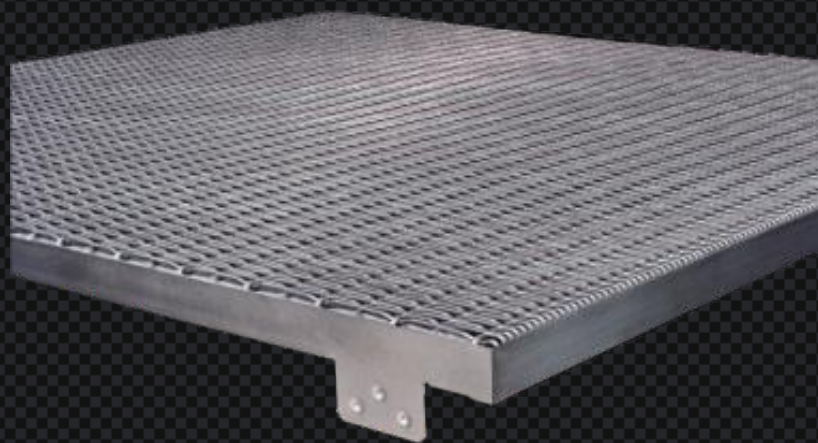
Progress Eco S.A.



*...to be in progress.*

**ASTRO**  
System **Pro-CLIP**

# Metal ceilings



Progress Architectural  
Steel Structures

[www.progressarch.com](http://www.progressarch.com)

# Metal ceilings Progress Eco SA

## Description

Progress Steel Ceilings Systems combine advanced production technologies with unique design potential. They are modern and durable ceilings made of stainless or galvanized steel and aluminium. Panels can be assembled on standard constructions which can be visible, partially or totally hidden.

Panels are made of innovative materials and are divided into three production groups:

- ASTRO - ceilings made of woven wire mesh
- DECO - ceilings made of welded screens
- CARO - ceilings made of expanded metal sheet

## Designs and specifications for the ASTRO Pro-CLIP system



Net type:	Open area	Mesh	Height	Weight	Material
<b>VIRGO P07010</b>	45,57%	15,5x2,0mm	3,2mm	6,87 kg	AISI 304, 316
<b>VIRGO P07020</b>	43,30%	15,5x2,0mm	3,5mm	7,87 kg	AISI 304, 316
<b>VIRGO P07040</b>	45,85%	26,5x2,0mm	3,5mm	7,45 kg	AISI 304, 316

**Application:** Exterior: Acid resistant AISI 316  
Interior: Stainless steel AISI 304  
Carbon galvanised varnished steel (RAL)



Net type:	Open area	Mesh	Height	Weight	Material
<b>TAURUS P02010</b>	55,92%	3,5x14,5mm	3,8mm	6,57 kg	AISI 304, 316
<b>TAURUS P02030</b>	63,00%	2,8x10,8mm	2,2mm	3,25 kg	AISI 304, 316
<b>TAURUS P02040</b>	60,00%	2,3x6,5mm	1,8mm	3,00 kg	AISI 304, 316

**Application:** Exterior: Acid resistant AISI 316  
Interior: Stainless steel AISI 304  
Carbon galvanised varnished steel (RAL)



Net type:	Open area	Mesh	Height	Weight	Material
<b>LEO P06040</b>	52,00%	30,0x2,5mm	4,5mm	6,87 kg	AISI 304, 316
<b>LEO P06070</b>	57,00%	15,5x3,0mm	3,0mm	5,47 kg	AISI 304, 316
<b>LEO P06051</b>	49,40%	25,0x3,5mm	4,8mm	3,55 kg	Aluminium

**Application:** Exterior: Acid resistant AISI 316  
Interior: Stainless steel AISI 304  
Carbon galvanised varnished steel (RAL)  
Aluminium

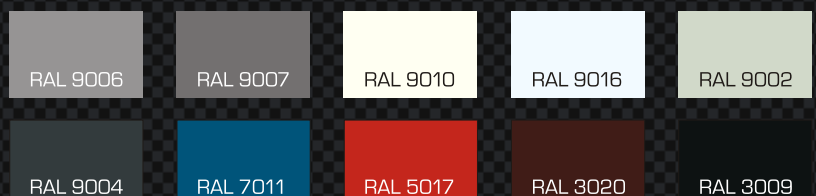


Net type:	Open area	Mesh	Height	Weight	Material
<b>ARIES P01020</b>	44,40%	2,0x2,0mm	1,8mm	4,52 kg	AISI 304, 316
<b>ARIES P01060</b>	51,00%	4,0x4,0mm	3,8mm	6,20 kg	AISI 304, 316

**Application:** Exterior: Acid resistant AISI 316  
Interior: Stainless steel AISI 304  
Carbon galvanised varnished steel (RAL)

## RAL colour palette

Basic colours in accordance with standard RAL colour palette (RAL 9006, 9007, 9010, 9016, 9002, 9004, 7011, 5017, 3020, 3009).



Other colours from RAL palette available on request.

Presented colours may vary.  
While choosing a colour it is advised to choose it from an original RAL palette.

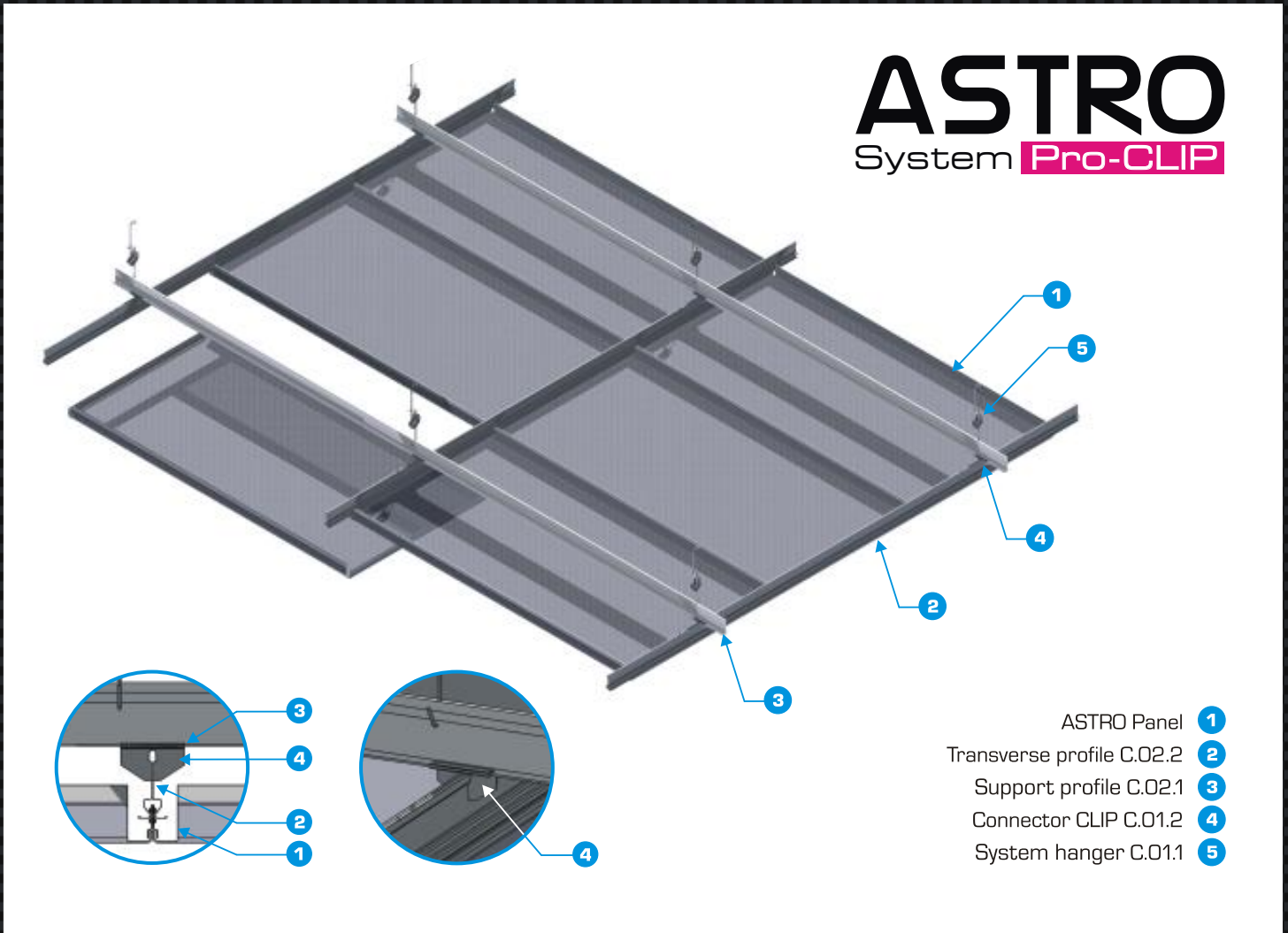
# ASTRO Line system Pro-CLIP

## Standard panels and dimensions

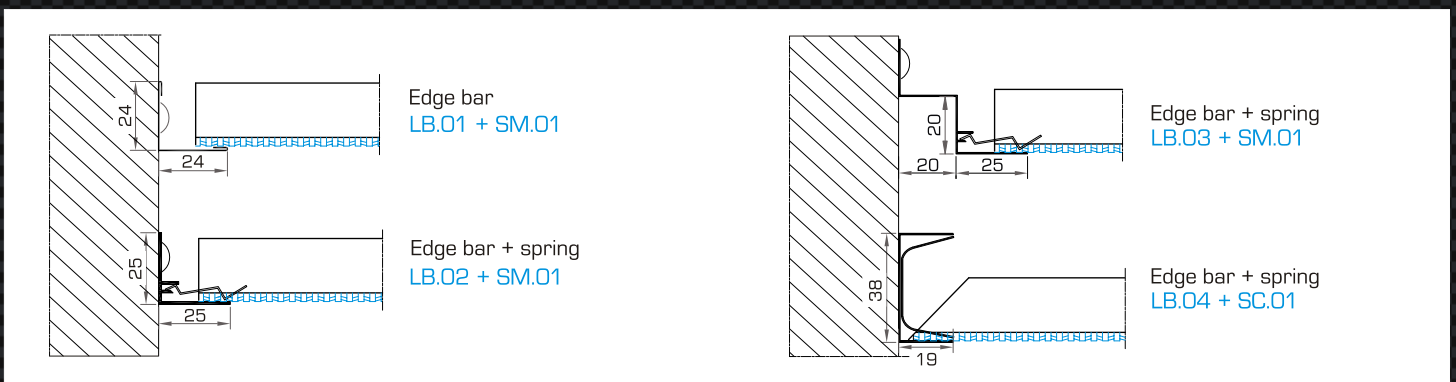
Panel format*	Slot parallel to the edge
600 x 1200 mm	600 mm

\* Other dimensions available on special order

## Pro-CLIP fixing system



## Sidewall solutions



## Norms and Certificates



Progress Metal Ceiling Systems have CE certificate in accordance with the norm PN-EN 13964:2005. The quality of our products is based on many years of experience and knowledge of our employees. We apply a controlling system which is in accordance with procedures and instructions of the holding certificate of Quality Management System ISO 9001:2008. Metal ceiling panels are classified as non-inflammable and non-spreading fire. They're classified as an A1 class regarding fire reaction.

## Medium usage of ceiling elements

Element	Label	Number of panels required	600x1200
ASTRO Panel	-	pc./m <sup>2</sup>	1,39
Transverse profile	C.02.2	lm	0,84
Support profile	C.02.1	lm	0,84
Connector CLIP	C.01.2	pc.	0,70
System hanger	C.01.1	pc.	0,70

## Usage and maintenance

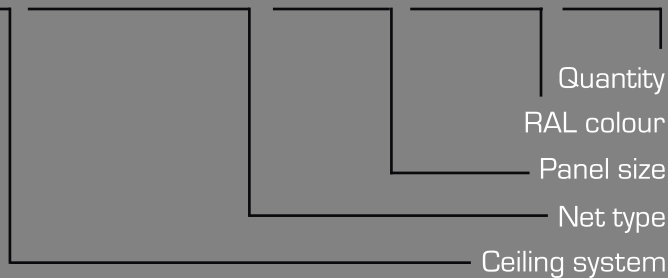
Progress Metal Ceiling Systems are Perfect for both public and commercial interiors such as:

- shopping centres,
- airports
- railway and bus stations
- schools, universities and libraries
- museums and galleries
- offices and exhibition halls

Due to high quality of used materials and the possibility of cleaning, they are perfect for very humid or extensively used and polluted places. The use of proper inserts in some solutions fulfil the acoustic demands as for sound isolation and absorption.

## Order description

ASTRO Pro-T24 VIRGO Z10080 600x600 RAL 3009 1000pc.



Ceiling panels are packed in cartons or wrapped in bubble packaging. Remaining elements are packed according to the specification. Transportation costs are not included in prices of panels.

## General applications

Metal Ceiling Systems allow for easy installation of lighting fixture and other elements of installation [eg.: speakers, diffusers, fixtures] provided that they're suspended under main ceiling.



Lighting and sound system



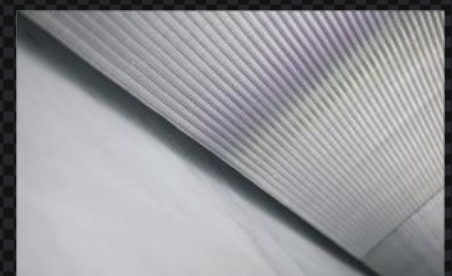
Communication



Air-conditioning and ventilation



Combinations



Perimeter solution

# www.progressarch.com



**Progress Eco S.A.**  
Dobrów 7  
28-142 Tuczępy, PL  
tel: +48 15 864 62 70  
fax: +48 15 864 62 78  
www.progressarch.com  
arch@progressarch.com

**Office in Poznań**  
ul.Św. Michała 65  
61-005 Poznań, PL  
tel/fax:+48 61 873 33 01  
tel/fax:+48 61 873 33 30  
www.progressarch.com  
poznan@progressarch.com

**Office in Kielce**  
ul.Trzuskawicka 16  
25-801 Kielce, Poland  
tel: +48 41 346 50 06  
fax: +48 41 346 50 08  
www.progressarch.com  
arch@progressarch.com

...to be in progress.

