

# Screen/Baffle Metal Ceiling Systems



**HunterDouglasContract**

CEILINGS





*Cover:* Ft. Lauderdale Airport,  
Ft. Lauderdale, FL  
*Architect:* HOK  
*Product:* Metal Screen/Baffle

*Left:* Lynnhaven Mall, Lynnhaven, VA  
*Architect:* Copeland, Novak & Israel  
*Product:* Metal Screen/Baffle

*Right:* Tuas Checkpoint, Tuas, Malaysia  
*Architect:* Public Works Department  
*Product:* V200



Luxalon® screen ceilings are designed to provide a dramatic, low cost method to define the ceiling plane without sacrificing the spacious feeling of a higher ceiling. Large spaces such as airports, convention centers, shopping malls, sports facilities and retail stores are ideal projects for screen ceilings.

#### **DESIGN FLEXIBILITY**

Screen ceilings can be designed with 100 mm, 150 mm or 200 mm (nominal 4", 6" or 8") panels. Panel size, spacing, angle and color can be used to create a visual focal point or coordinate with other design elements. Screen ceilings are available in a variety of colors. Custom colors available upon request. Screen ceilings with pivoted carriers are ideal for sloped ceilings.

#### **QUICK INSTALLATION**

Screen ceilings are designed with a minimum number of parts for quick and easy installation. Movable, fixed and pivot carrier systems can be installed in combination. Carrier systems are suspended by hanger wire in the conventional manner. Panels install in carriers by simply sliding into position.

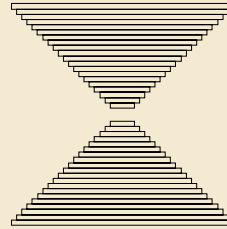
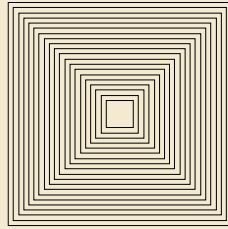
#### **EASY PLENUM ACCESS**

Screen ceilings installed with Luxalon's movable carrier system provide easy access to lighting and HVAC components in the ceiling plenum. Panels simply slide along the carrier system to gain access. The movable system facilitates maintenance of mechanical components and reduces damage to panels over the life of the ceiling.

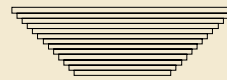
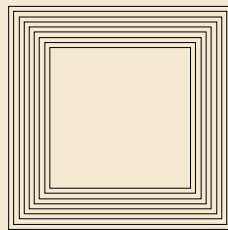
# SCREEN CONFIGURATIONS

## ELEVATION CHANGES

Luxalon® screen ceilings utilizing the pivot carrier system are ideal for projects requiring changes in ceiling height. Ceilings can be angled to 45°. Pyramids, inverted pyramids, truncated pyramids and other geometric shapes can be easily designed and installed with Hunter Douglas' screen ceiling system.



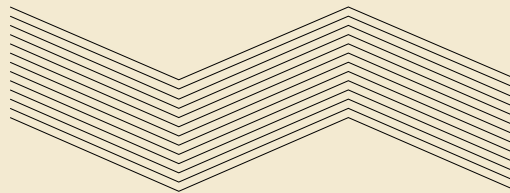
Pyramids



Truncated Pyramids

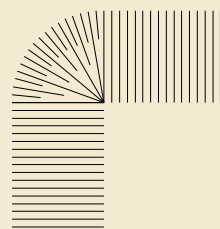
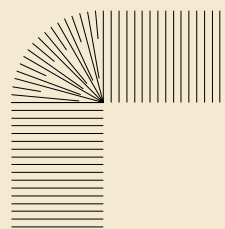
## SPECIAL SITUATIONS

Screen ceilings can be used to create special patterns and borders. Basket weave and herringbone are two typical patterns used to create special ceiling or border treatments. Radial applications can also be accommodated by using standard ceiling T-grid and a special pivot clip.

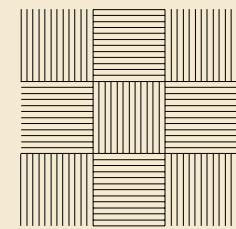


Herringbone Pattern

Radial Patterns



Basket Weave Pattern



## VARYING SCREEN HEIGHT

Panel depth can be varied to create ceilings with step or roll patterns. 100 mm, 150 mm and 200 mm (nominal 4", 6" and 8") panels can also be used to add visual interest by varying on-center spacing and color.

Roll Pattern

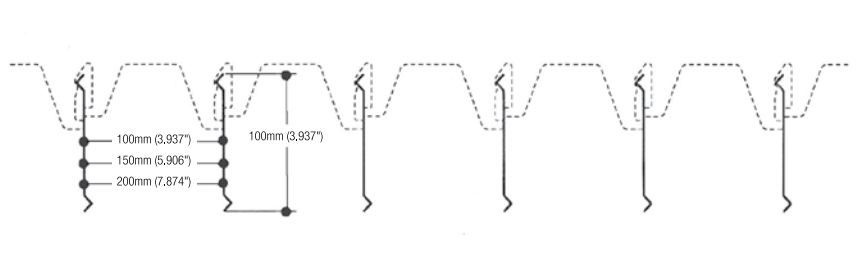


Step Pattern



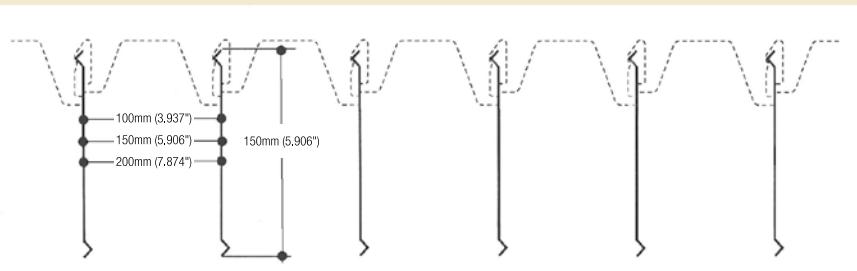
**V-100**

V-100 panels are 100 mm (3.937") deep and available 100 mm, 150 mm, or 200 mm (nominal 4", 6" and 8") on-center. V-100 panels are available for interior applications. Clips to lock panels into position available for movable carrier and pivot carrier applications.



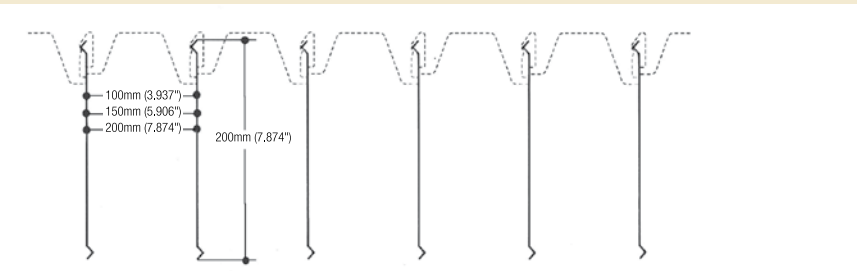
**V-150**

Luxalon® V-150 panels are 150 mm (5.906") deep and available 100 mm, 150 mm, or 200 mm (nominal 4", 6" and 8") on-center. V-150 panels are available for interior applications. Clips to lock panels into position available for movable carrier and pivot carrier applications.



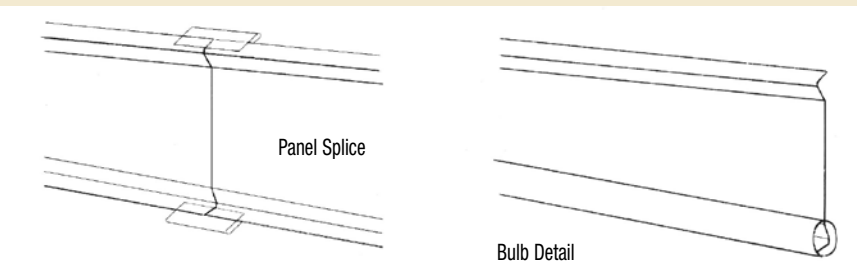
**V-200**

V-200 panels from Hunter Douglas Contract are 200 mm (7.874") deep and available 100 mm, 150 mm, or 200 mm (nominal 4", 6" and 8") on-center. V-200 panels are available for interior applications only. Clips to lock panels into position available for movable carrier and pivot carrier applications.



**ACCESSORIES**

A special panel splice allows visually unlimited panel length. The splice is simply slid in place over the overlapped area of two panels. A bulb detail is also available to soften the appearance of the screen ceiling. The bulb slides over the fluted area of each panel.





Hunter Douglas has long designed and manufactured its ceiling systems to follow the principles of sustainability and indoor environmental quality. We have the experience, the knowledge and the products.

Key environmental programs and features:

- Our U.S. manufacturing location, which produces all our metal ceiling systems for the North American market, qualifies as a zero landfill facility
- Hunter Douglas Contract is a longtime member of the U.S. Green Building Council
- Hunter Douglas has an ongoing commitment to research that improves the sustainability of our sourcing and manufacturing process.
- GREENGUARD Gold Certified

#### LEED EXPERTISE

Our project managers and engineers have worked on many LEED® rated and/or sustainably designed projects, from manufacturing facilities to high-rise office towers. Contact us for more information on products and documentation for projects that include environmental design considerations.

Our project managers and engineers can assist architects/designers in a number of key areas to accumulate potential LEED® credits toward project certifications.

- MR Credit 2.1 and 2.2
  - Our aluminum ceiling panels are factory-cut to size, significantly reducing field cutting and scrap.
- MR Credit 4.1 and 4.2
  - Our aluminum ceilings contain up to 95% recycled content. Approximately 40% is post-consumer.
- EQ Credit 3.1 and 3.2
  - Our metal ceiling panels have no reportable VOC's.
- EA Credit 1
  - Our metal ceiling panels may have a light reflectance of (LR) 1 which may contribute to energy savings.



*Photo at left*

Project: Siemens Corporation  
Location: Mexico City, Mexico  
Architect: Serrano Monjaraz Arquitectos  
Product: Baffle



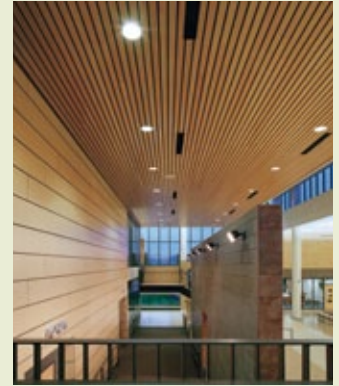
Project: PHX Sky Train™  
Location: Phoenix, AZ  
Architect: HOK  
Product: High Profile Series™ Baffles  
*Photo Credit: Bob Perzel*



Project: L.B. Landry High School  
Location: New Orleans, LA  
Architect: Eskew+Dumez+Ripple  
Product: Tubrise  
*Photo Credit: Tim Hursley*



Project: L.B. Landry High School  
Location: New Orleans, LA  
Architect: Eskew+Dumez+Ripple  
Product: Tubrise – Exterior Screen  
*Photo Credit: Tim Hursley*



Project: Chanhassen High School  
Location: Chanhassen, MN  
Architect: Perkins + Will Architects  
Product: Woodwright™ Box Series  
*Photo Credit: Bob Perzel*

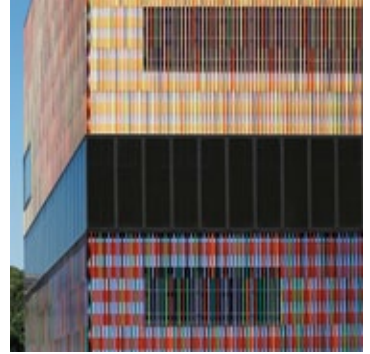
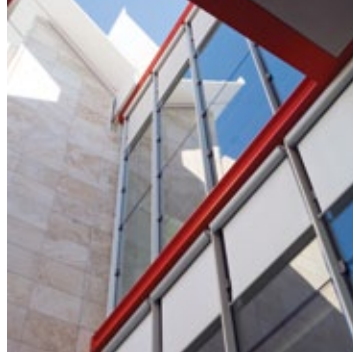
As architects and designers expand the boundaries of design, Hunter Douglas continues to work alongside them. Our ceiling systems are found in some of the world's most recognizable projects.

## Learn More

- Call 800-366-4327 to speak with a ceilings specialist
- [www.hunterdouglascontract.com/ceilings](http://www.hunterdouglascontract.com/ceilings)


# HunterDouglasContract

WINDOW COVERINGS	CEILINGS	SOLAR CONTROL	FAÇADES
------------------	----------	---------------	---------



Hunter Douglas Contract  
5015 Oakbrook Parkway, Suite 100  
Norcross, GA 30093  
Phone: 800.366.4327  
Fax: 770.806.0214  
[www.hunterdouglascontract.com/ceilings](http://www.hunterdouglascontract.com/ceilings)

© 2013 Hunter Douglas. All rights reserved. All trademarks used herein are the property of their respective owners.

 This brochure was printed using recycled paper.