

Plank & Tile Ceiling Systems



HunterDouglasContract

CEILING



A Unique Sense of Tile.

Plank and tile ceilings by Hunter Douglas offer the combination of style and functionality for which we are known worldwide. A complete range of panel and carrier systems includes large-scale planks; versatile hook-on, snap-in and lay-in tiles; and torsion-spring systems.

See product details and selected projects at www.hunterdouglascontract.com/ceilings

Cover

Project: McCamish Pavilion at Georgia Tech
Location: Atlanta, GA
Architect: Populous
Product: Woodwright™ Torsion Spring
Photo Credit: Bob Perzel

Project: Richard E. Lindner Center, University of Cincinnati
Location: Cincinnati, OH
Architect/Specifier: Bernard Tschumi; glaserworks; Eva Maddox
Product: Plank Hook-On and Snap-In, custom silk screening design



CAPABILITIES 2

300C 4

TORSION-SPRING 6

HOOK-ON 8

SNAP-IN 10

GLADIUS™ PANELS 12

LAY-IN 14

SUSTAINABILITY 16

From Design to Delivery.

Sixty years ago, Hunter Douglas pioneered the development of metal suspended ceiling systems. We've been hard at work ever since, creating new solutions to meet the evolving requirements of architects, designers, and construction professionals across Europe, North America, Asia and beyond.

Project: SunLife Stadium
Location: Miami, FL
Architect: HOK Sport Venue Event
Product: Torsion-Spring, custom color matched: Sleepy Blue



Project: Sears Centre
Location: Hoffman Estates, IL
Architect: Ryan Companies
Product: 300C, finish: Cherry

Hunter Douglas backs its ceiling systems with a creative team of project managers and ceilings engineers, not to mention state-of-the-art manufacturing capabilities. Challenge us. No matter your vision, we can handle it – from initial design to final delivery.

Our decades of experience, advanced design capabilities, and automated processes allow us to develop to your specifications:

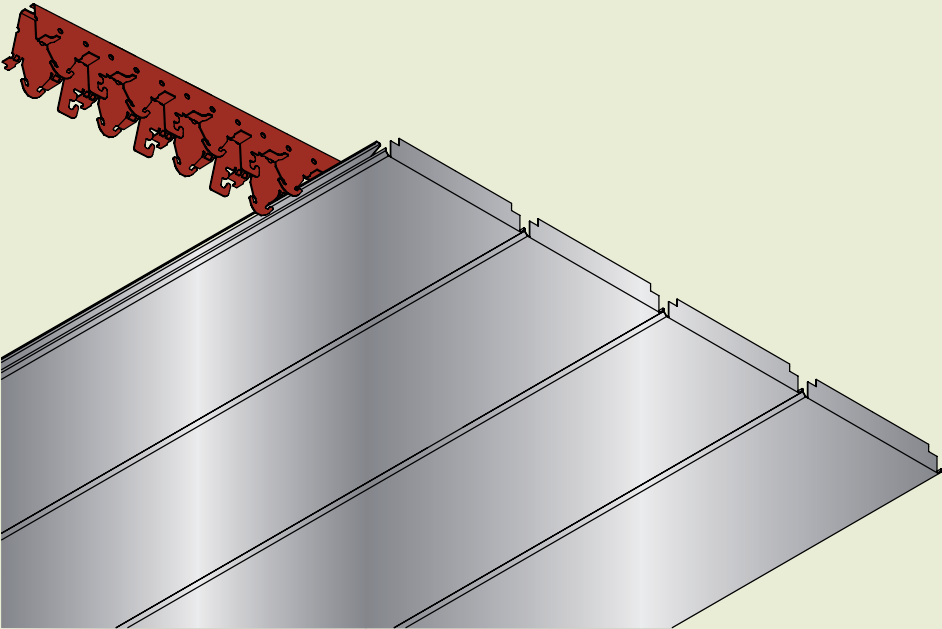
- Custom panel finishes, including custom color matches, simulated wood looks, and more
- Full range of sizes
- Curved carriers and panels with a variety of lengths and radii
- Create your own designs using our custom and skip perforation options
- Versatile trim applications, including a wide range of extruded and roll-formed options

300C

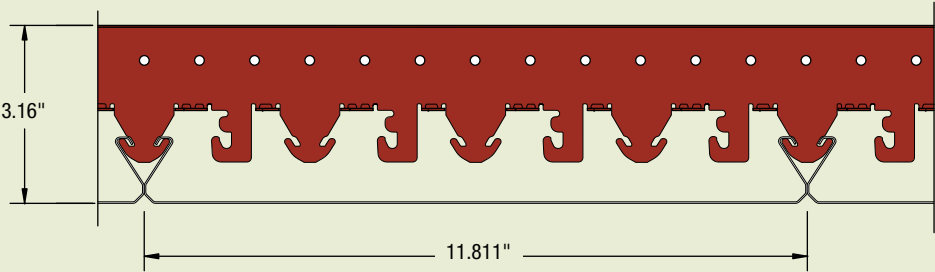
Impressive Size. Impressive Look.

For designs that need to make a big impression, the long, uninterrupted panel lengths of our 300C system are the choice. With lengths up to 19' 8" and a width of 11.8", 300C planks require fewer seams and joints. Our concealed suspension system complements this clean appearance to create a sleek, monolithic look.

300C PANEL



PANEL MODULE



Key features of 300C:

- Simple & economical installation
- Unique design enables panels to span greater distance than traditional ceilings resulting in fewer carriers
- A concealed suspension system for a clean, monolithic ceiling appearance
- Allows random access/point accessibility to plenum. No special tools required
- Interior and exterior applications
- Trim systems available with both roll-form and extruded options
- Panels contain up to 95% recycled content
- Compatible with industry-standard fixtures and air diffusers

STANDARD SIZES

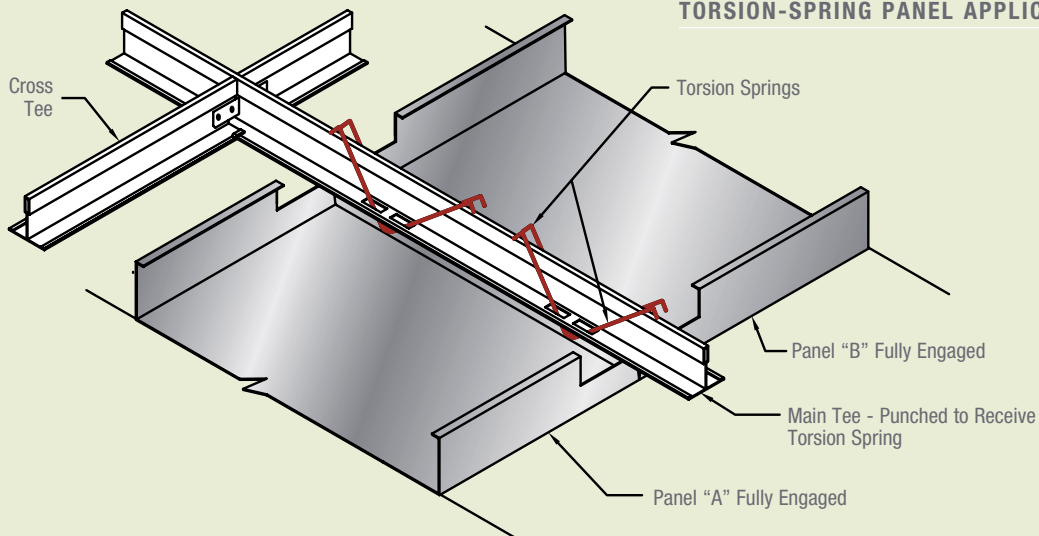
Length: Up to 19' 8"

Spring to It.

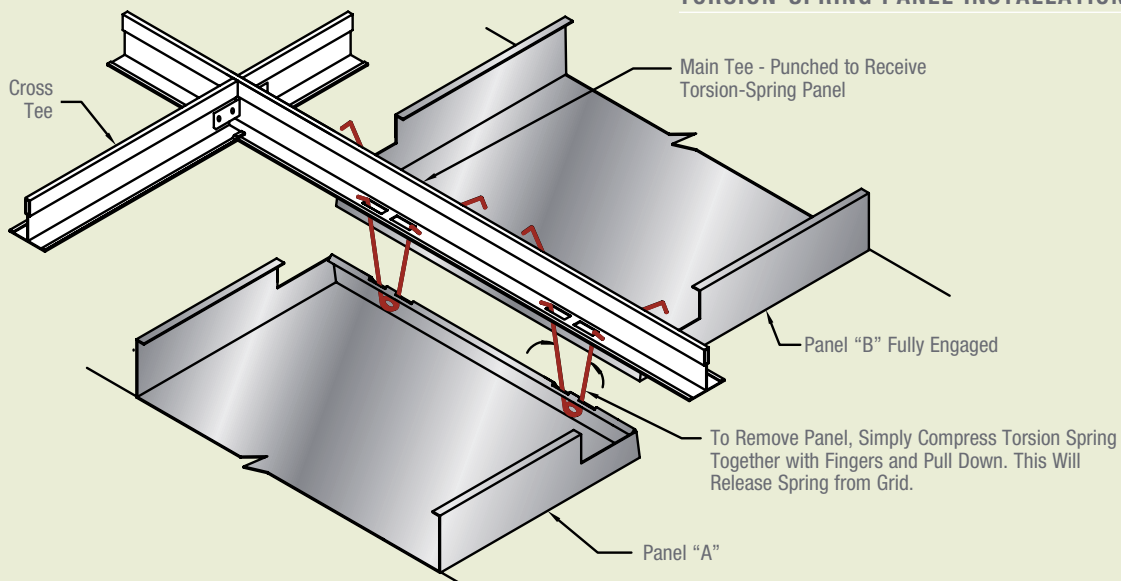
Torsion-Spring ceilings from Hunter Douglas allow easy and safe downward access for a wide variety of applications... from offices to stadiums and beyond. Our versatile carrier system allows the panel to swing down from the plenum, making Torsion-Spring a superb choice when panel removal can be challenging, such as in airports or other areas where ceilings are set high, or in arenas and convention centers, which may have significant foot traffic.

Project: Lumiere Casino by Pinnacle Entertainment
Location: St. Louis, MO
Architect: Marnell Architecture
Product: Torsion-Spring, finish: Simulated Wood Laminate

TORSION-SPRING PANEL APPLICATION



TORSION-SPRING PANEL INSTALLATION / REMOVAL



Key features of Torsion-Spring:

- Swing-down feature allows random access/point accessibility to plenum. No special tools required
- Trim systems available with both roll-form and extruded options
- Panels contain up to 95% recycled content
- Compatible with industry-standard fixtures and air diffusers
- Design flexibility with our custom and skip perforation options

STANDARD SIZES

Tile: 2' x 2', 2' x 4' and 30" x 30"

Plank: widths from 12" to 48"
length 48", 60", 72" and 96"

(custom sizes available)

STANDARD MATERIAL THICKNESSES

.032", .040" and .062" aluminum

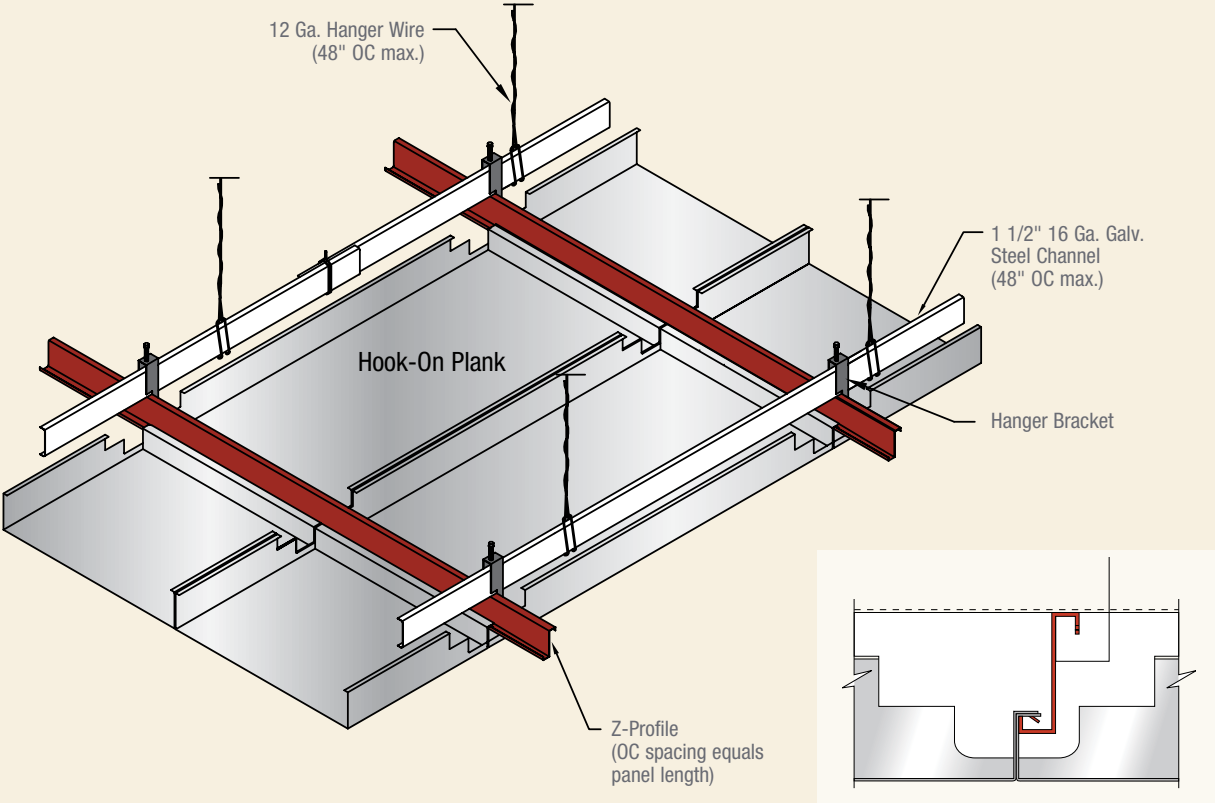
(additional thicknesses available to your specifications to meet your engineering requirements)

Get Hooked.

We optimized our Hook-On panels for those who need the most adaptable and customizable metal ceiling available. Our variable carrier system allows architects to create nearly any design – without sacrificing performance or accessibility.

Project: L.B. Landry High School
Location: New Orleans, LA
Architect: Eskew+Dumez+Ripple
Product: Hook-On
Photo Credit: Tim Hursley

HOOK-ON PANEL



Key features of Hook-On:

- Easy access to plenum. No special tools required
- Trim systems available with both roll-form and extruded options
- Panels contain up to 95% recycled content
- Compatible with industry-standard fixtures and air diffusers
- Design flexibility with our custom and skip perforation options

STANDARD SIZES

Width: 12" – 48"
 Length: Up to 120"

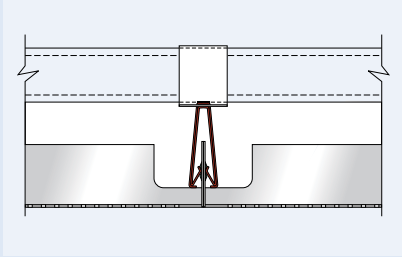
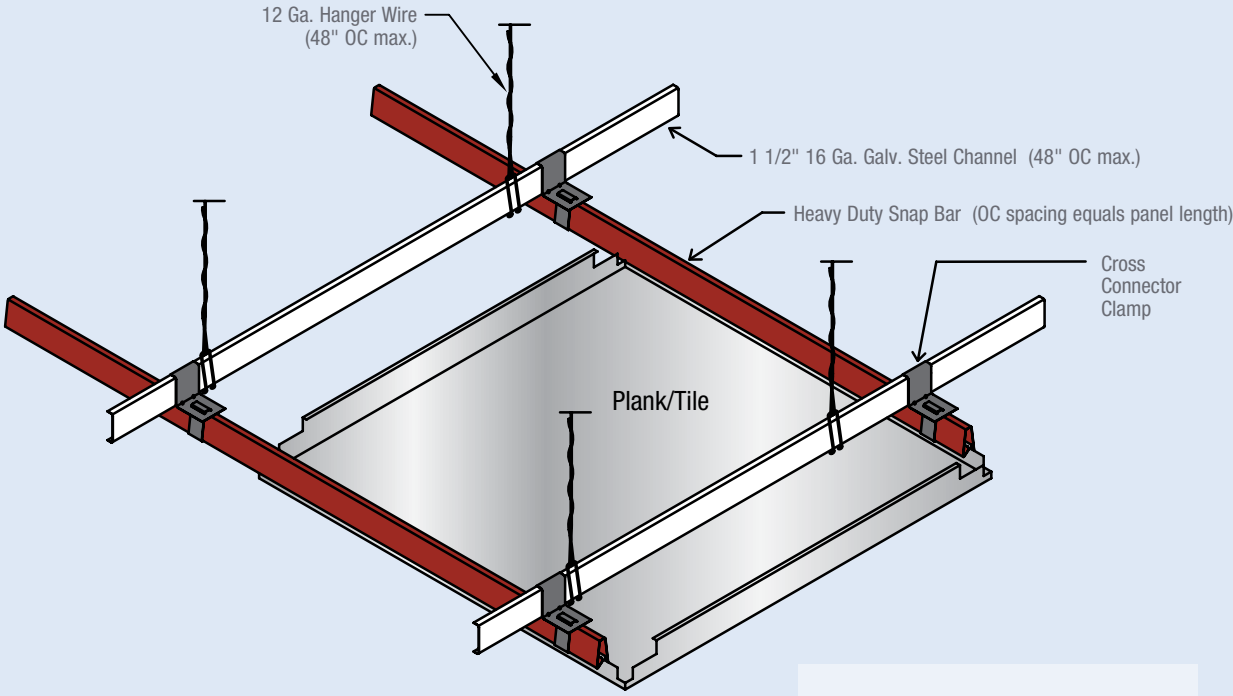
STANDARD MATERIAL THICKNESSES

.032", .040" and .062" aluminum
 (additional thicknesses available to your specifications to meet your engineering requirements)

Make It a Snap.

The proven durability of Snap-In panels – one of Hunter Douglas' first concealed suspension ceiling systems for metal panels – makes them a good selection for ceiling and wall applications. Snap-In installation is a familiar and proven process for the commercial trades.

SNAP-IN PANEL



Key features of Snap-In:

- Ceiling and wall applications
- Interior and exterior applications
- Hinged access doors available
- Trim systems available with both roll-form and extruded options
- Panels contain up to 95% recycled content
- Compatible with industry-standard fixtures and air diffusers
- Design flexibility with our custom and skip perforation options

STANDARD SIZES		
12" x 24"	12" x 72"	24" x 24"
12" x 48"	12" x 96"	24" x 48"
12" x 60"		

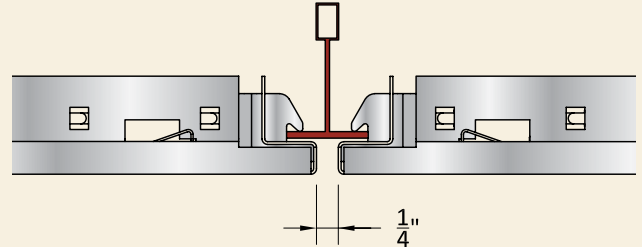
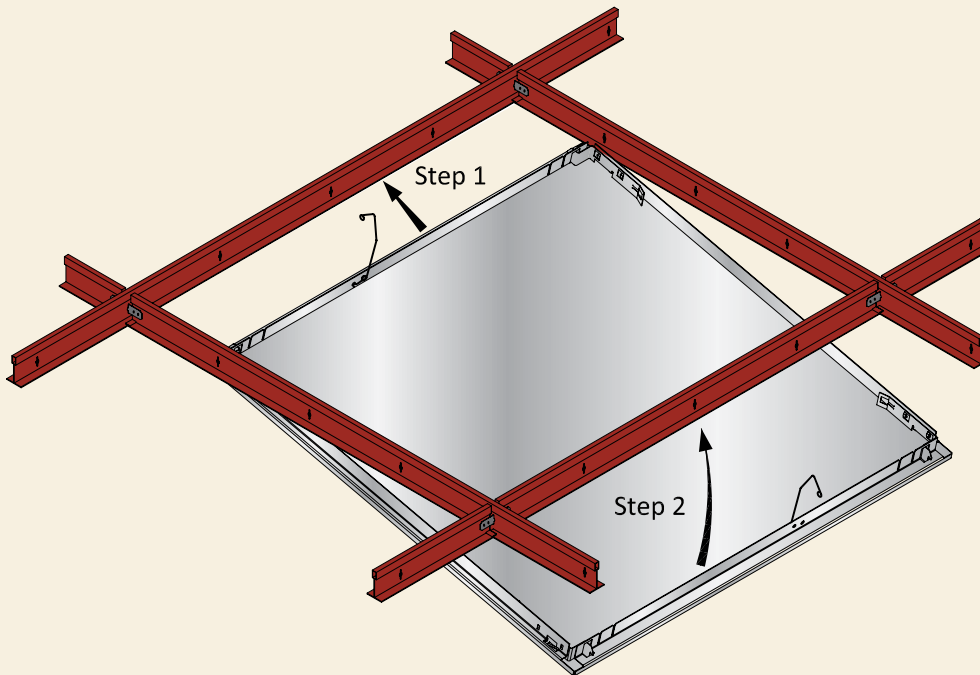
STANDARD MATERIAL THICKNESSES
.032" or .040" aluminum

Click It.

Gladius™ metal ceiling panels from Hunter Douglas feature “stab and click” installation on standard 15/16” grid systems. The self-centering, self-leveling, self-aligning installation is confirmed by an audible “click”.

Project: Luxury Auto Mall - BMW
Location: Sioux Falls, SD
Architect: Darwin Lindahl Architect, P.A.
Product: Gladius™ Panels
Photo credit: Bob Perzel

GLADIUS™ PANEL INSTALLATION



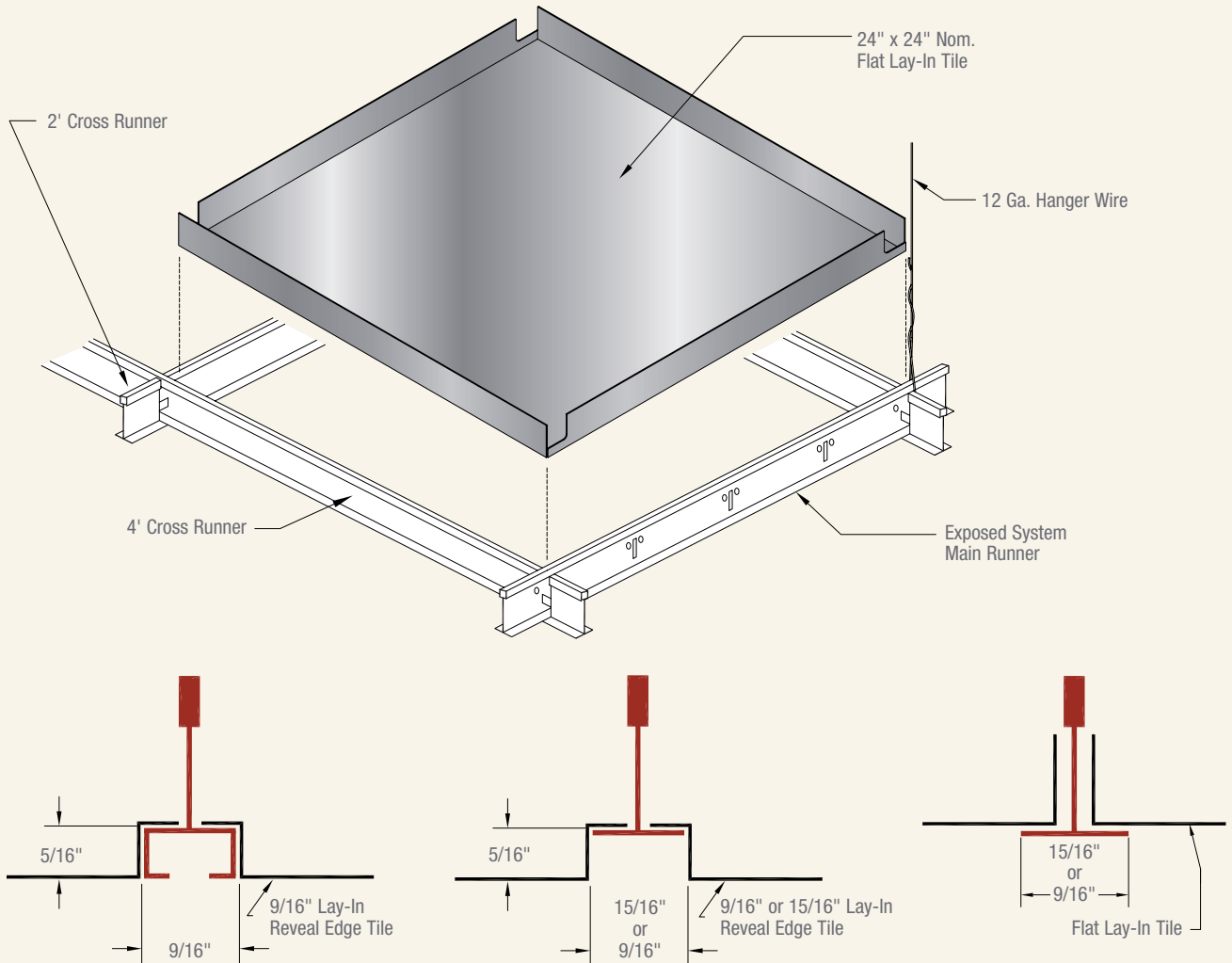
Key features of Gladius:

- 24" x 24" panels with square-edge $\frac{1}{4}$ " reveal
- Accommodates industry-standard service devices (lighting, diffusers, etc.)
- 100% point-accessible & downward accessible
- Trim systems available
- Available in a number of finishes and perforation patterns with specifiable $\frac{3}{4}$ ", $\frac{1}{2}$ ", $\frac{1}{4}$ " and $\frac{1}{8}$ " borders, allowing for various NRC requirements and aesthetics
- Class A fire-rated
- Meets building code for seismic zones A, B, C, D, E, and F
- Interior and exterior applications available
- No VOCs: No added urea-formaldehyde
- Panels contain up to 95% recycled content

Lay It Out.

Lay-In planks and tiles from Hunter Douglas are available in a wide range of sizes, flat or reveal edge details, all on standard grid options. Lay-In ceilings are a simple, economical way to add a metal ceiling to a project.

LAY-IN PANEL



Key features of Lay-In:

- Edge options: flat and reveal
- Easy access to plenum. No special tools required
- Trim systems available with both roll-form and extruded options
- Panels contain up to 95% recycled content
- Compatible with industry-standard fixtures and air diffusers
- Design flexibility with our custom and skip perforation options

STANDARD SIZES

12" x 24"	20" x 60"	24" x 24"	30" x 30"
12" x 48"		24" x 48"	30" x 60"
12" x 60"		24" x 60"	
		24" x 72"	
		24" x 96"	
		24" x 120"	

GRID OPTIONS

9/16" and 15/16"

STANDARD MATERIAL THICKNESSES

.032", .040" and .062" aluminum

(additional thicknesses available to your specifications to meet your engineering requirements)



Hunter Douglas has long designed and manufactured its ceiling systems to follow the principles of sustainability and indoor environmental quality. We have the experience, the knowledge and the products.

Key environmental programs and features:

- Hunter Douglas Contract is a longtime member of the U.S. Green Building Council
- Our U.S. manufacturing location, which produces all our metal ceiling systems for the North American market, qualifies as a zero landfill facility
- Continual R&D is important to Hunter Douglas Contract to create products as well as processes that are more environmentally friendly
- GREENGUARD Gold Certified

LEED EXPERTISE

Our project managers and engineers have worked on many LEED® rated and/or sustainably designed projects, from manufacturing facilities to high-rise office towers. Contact us for more information on products and documentation for projects that include environmental design considerations.

Our project managers and engineers can assist architects/designers in a number of key areas to accumulate potential LEED® credits toward project certifications.

- MR Credit 2.1 and 2.2
 - Our aluminum ceiling panels are factory-cut to size, significantly reducing field cutting and scrap.
- MR Credit 4.1 and 4.2
 - Our aluminum ceilings contain up to 95% recycled content. Approximately 40% is post-consumer.
- EQ Credit 3.1 and 3.2
 - Our metal ceiling panels have no reportable VOC's.
- EA Credit 1
 - Our metal ceiling panels may have a light reflectance of (LR) 1 which may contribute to energy savings.



Large photo, left:

Project: Sears Centre
Location: Hoffman Estates, IL
Architect: Ryan Companies
Product: 300C



Project: Bush Intercontinental Airport
Location: Houston, TX
Architect: Gensler, Houston
Product: Hook-On



Project: St. Luke's Professional Building
Location: Houston, TX
Installer: Cesar Pelli & Associates
Product: Snap-In, exterior soffit



Project: JFK, Terminal 1
Location: New York, NY
Architect: William Nicolas Bodouva & Associates
Product: 300C, color: Natural

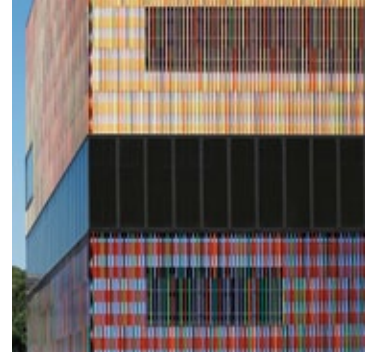
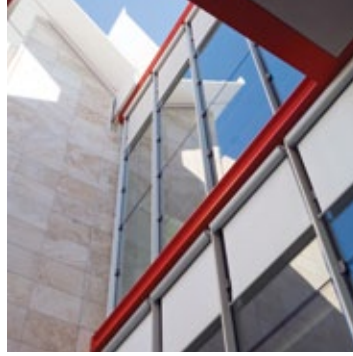
As architects and designers expand the boundaries of design, Hunter Douglas continues to work alongside them. Our ceiling systems are found in some of the world's most recognizable projects.

Learn More

- Call 800-366-4327 to speak with a ceilings specialist
- www.hunterdouglascontract.com/ceilings


HunterDouglasContract

WINDOW COVERINGS	CEILINGS	SOLAR CONTROL	FAÇADES
------------------	----------	---------------	---------



Hunter Douglas Contract
5015 Oakbrook Parkway, Suite 100
Norcross, GA 30093
Phone: 800.366.4327
Fax: 770.806.0214
www.hunterdouglascontract.com/ceilings

© 2013 Hunter Douglas. All rights reserved. All trademarks used herein are the property of their respective owners.

 This brochure was printed using recycled paper.