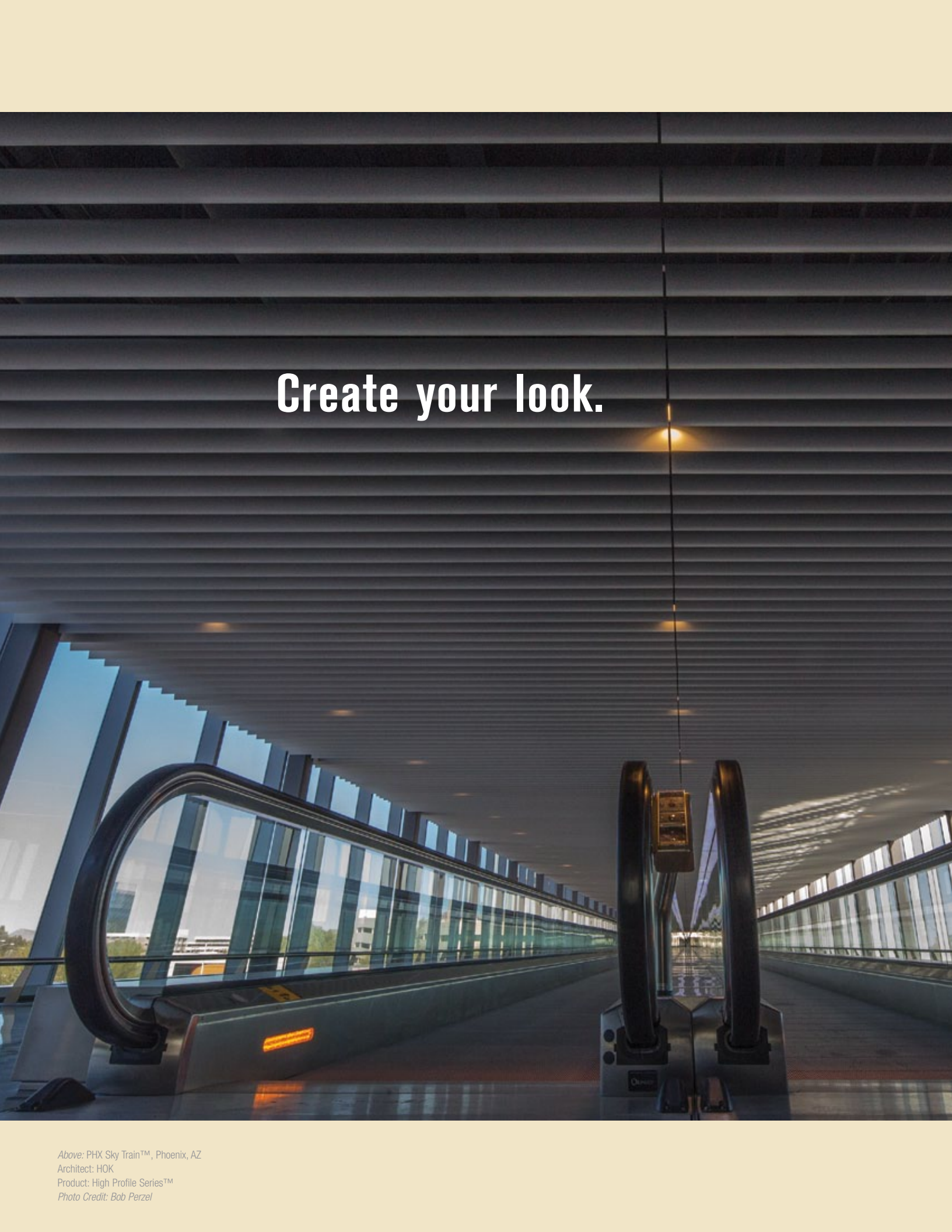


Luxalon® Metal Ceilings



HunterDouglasContract

CEILINGS

A long, modern airport skytrain with a slatted ceiling and large glass windows. The skytrain is moving along a track, and the ceiling is composed of horizontal slats. The windows are large and provide a view of the outside world. The skytrain is a sleek, modern design with a curved handrail. The overall atmosphere is clean and futuristic.

Create your look.

Above: PHX Sky Train™, Phoenix, AZ
Architect: HOK
Product: High Profile Series™
Photo Credit: Bob Perzel



Sixty years ago, we pioneered suspended metal ceilings. We've been hard at work ever since, developing products to meet the demands of innovative architects and designers. We've crafted a comprehensive range of Luxalon® Metal Ceilings that excel in design and performance, including Linear, Open Plenum, Planks and Baffles. Each is available in a variety of styles, colors, and finishes, guaranteeing that no matter your vision, we've got the look you're after. Just dream it up. We'll be ready.

WOODWRIGHT™ CEILINGS 2

PLANK & TILE 4

CURVED PRODUCTS 8

LINEAR PLANK 10

LINEAR 12

EXTERIOR SOFFIT 16

CELL 18

BAFFLE 20

HIGH PROFILE SERIES™ BAFFLES 22

Go with the grain.

We don't believe creativity should be stifled by the limitations of material. That's why we've created Woodwright™ ceilings that offer the look of wood with the convenience and performance of metal. Products like Linear Box Series, Plank & Tile and High Profile Series™ are available in a variety of finishes, from real wood veneers to powder-coat wood looks, allowing you to create looks you never thought possible.



*Left: GSO Day Theatre & Arts Complex, Greensboro, NC
Architect: Calloway, Johnson, Moore & West, PA
Product: 84R, veneer: White Oak*

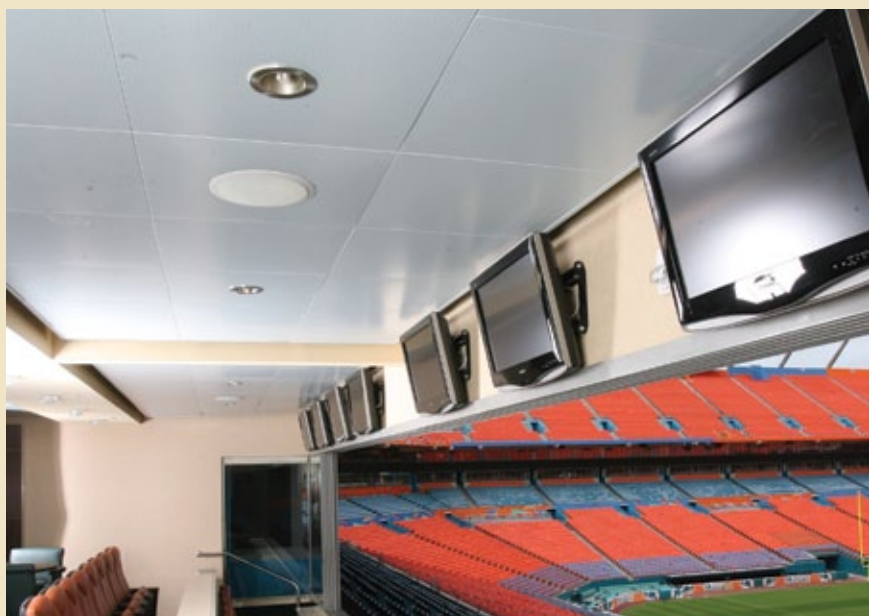
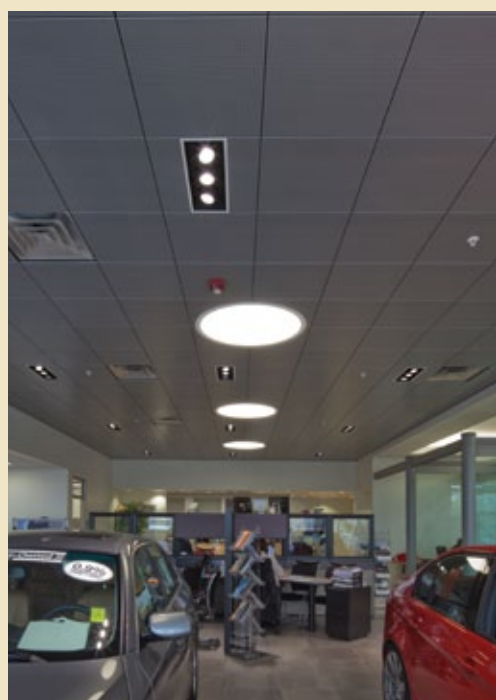
*Right: Home Plate Center at SODO, Seattle, WA
Architect: Freiheit & Ho Architects, Inc.
Product: Woodwright™ Multi-Box Series
Photo Credit: Bob Perzel*





Luxalon® Plank and Tile ceilings by Hunter Douglas blend style and functionality, offering a clean, monolithic look and a variety of options. Our precision engineering results in consistently flat panels. Lay-In, Snap-In, Hook-On, Gladius™ Panels, and Torsion Spring Plank and Tile systems offer optimal access to the plenum. Various perforation patterns, sizes up to 2' x 10', and the availability of exterior applications ensure that everyone can have their own sense of Tile.

It's hip to be square. Or rectangular.



Far Left: Austin City Hall, Austin, TX
 Architect: Antoine Predock and Cotera Kolar Negrete & Reed
 Product: Snap-In Plank, custom color: Bronze

Left: Luxury Auto Mall, BMW, Sioux Falls, SD
 Architect: Darwin Lindahl Architect, P.A.
 Product: Gladius™ Panels
 Photo Credit: Bob Perzel

Above: SunLife Stadium, Miami, FL
 Architect: HOK Sport Venue Event
 Product: Torsion Spring

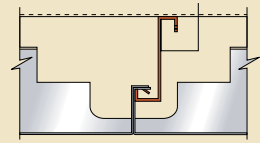
PLANK & TILE

Right: McCamish Pavilion at Georgia Tech, Atlanta, GA
Architect: Populous
Product: Woodwright™ Torsion Spring
Photo Credit: Bob Perzel

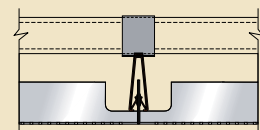




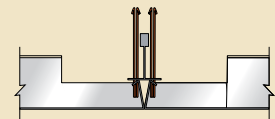
HOOK-ON



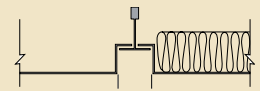
SNAP-IN



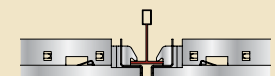
TORSION SPRING



LAY-IN REVEAL EDGE



GLADIUS™ PANELS





Above: KFC Yum! Center, Louisville, KY
 Architect: Populous
 Product: Woodwright™ Curved Torsion Spring
 Photo Credit: Bob Perzel

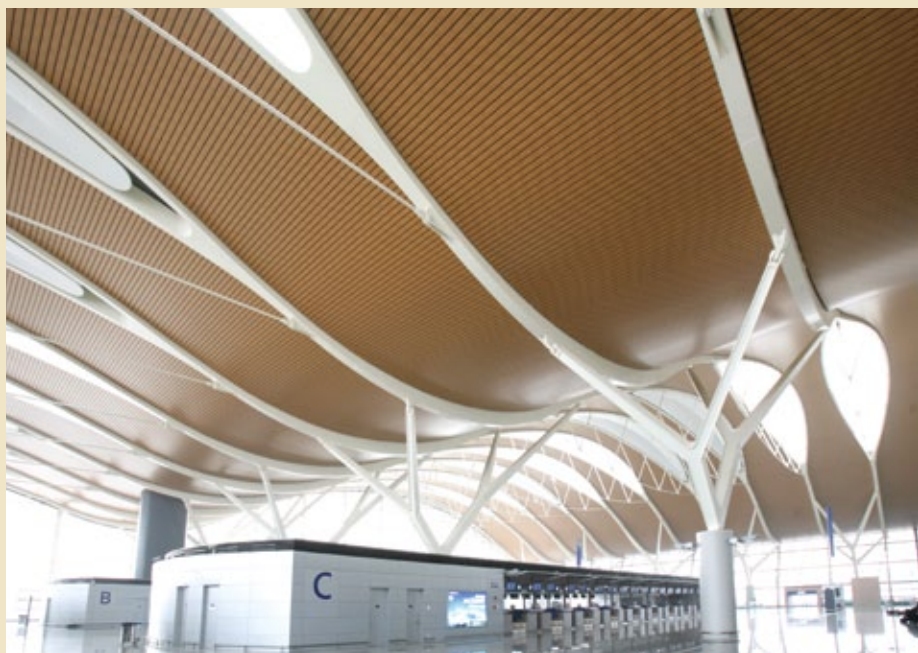
Right: Ian Thorpe Aquatic Centre, Sydney, Australia
 Architect: Harry Seidler and Associates
 Product: 84R - Curved

Far Right: Pudong Int'l Airport Term. 2, Shanghai, China
 Architect: East China Architectural Design & Research
 Product: Woodwright™ Box Series



Ahead of the curve.

Luxalon® Curved Products bring artistic freedom to the forefront. A growing design trend, these panels feature excellent acoustical properties and a variety of arch-lengths and radii that are perfect for creating arches and multilevel designs.

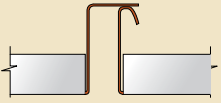


Impressive size. Impressive look.

Our 300mm Linear Plank ceilings create a distinct, smooth look. We offer a selection of cost-effective options to suit your project, including interior and exterior applications, perforations that provide exceptional acoustical performance, lengths up to 19' 8", and two distinct joint details. Whether you prefer a bevel-edged, monolithic look or a defined reveal, Luxalon® Linear Plank is the way to make a big first impression.

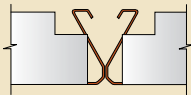
300A

Clean 10mm wide reveal



300C

Neat V-joint



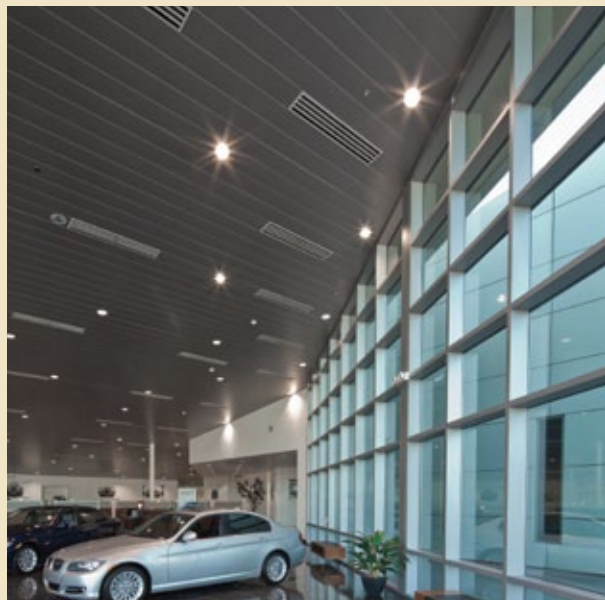
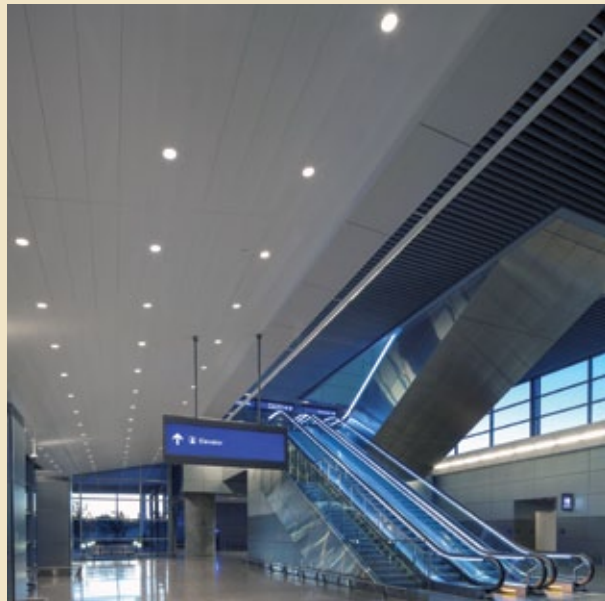
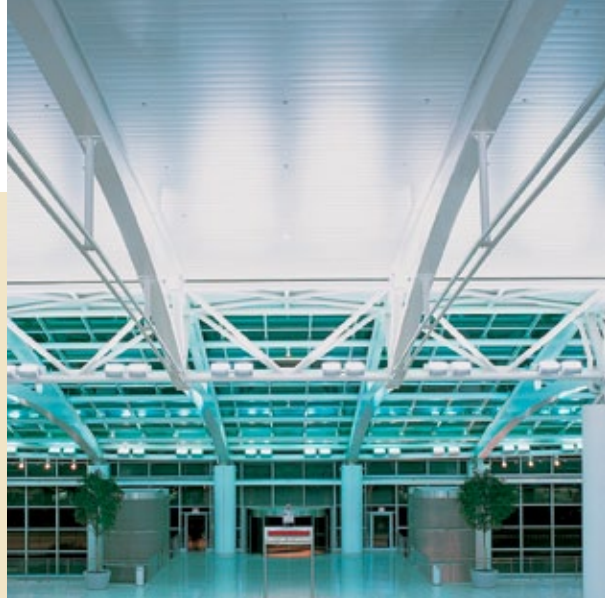
Middle: Indianapolis Airport, Indianapolis, IN
 Architect: AeroDesign Group and HOK
 Product: 300C

Far Top: JFK, Terminal 1, New York, NY
 Architect: William Nicholas Bodouva & Associates
 Product: 300C, color: Natural

Far Middle: PHX Sky Train™, Phoenix, AZ
 Architect: HOK
 Product: 300C
 Photo Credit: Bob Perzel

Far Bottom: Luxury Auto Mall, Chandler, AZ
 Architect: Barry R. Barcus Architect, Inc.
 Product: 300C
 Photo Credit: Bob Perzel







Luxalon® Linear metal ceiling systems highlight versatility, allowing a variety of innovative interior and exterior visual effects. Explore the softly rounded edges of 84R or use the clean, square corners and multiple depths of Box Series to create multilayered looks.

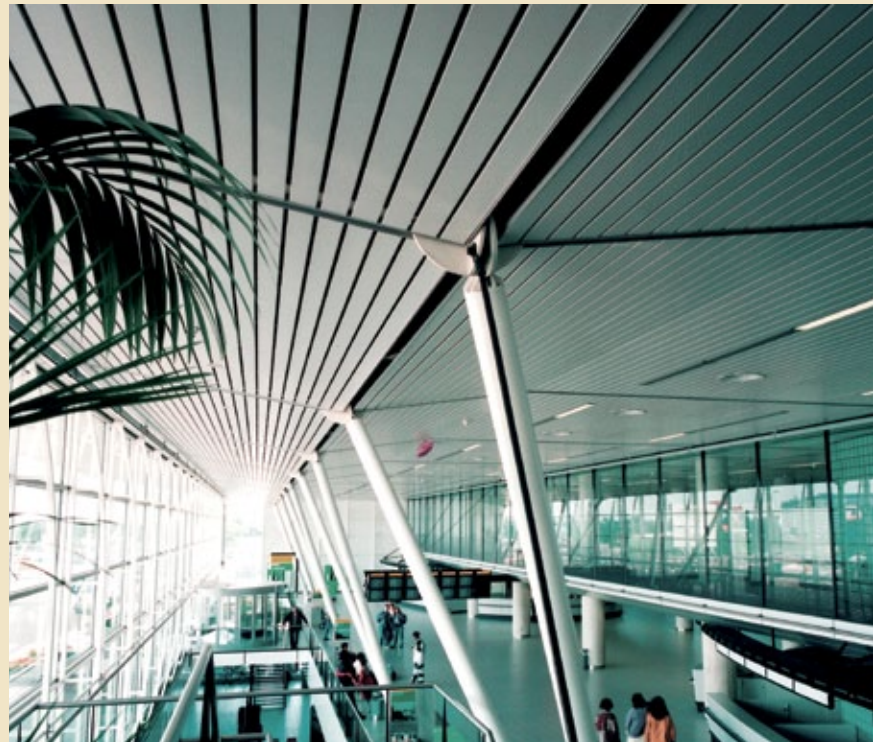


Left: Reebok World Headquarters, Canton, MA
 Architect: NBBJ Architects of Seattle
 Product: Box 4, color: Natural

Above: James E. Rogers College of Law, Univ. of AZ, Tucson, AZ
 Architect: Gould Evans (Phoenix)
 Product: Box Series
 Photo Credit: Roland Bishop

Right: Schiphol Airport Terminal, Amsterdam, the Netherlands
 Architect: Benthem Crouwel Architects
 Product: Box 6, color: White

In line with style.



LINEAR

No matter your style, linear has the looks you love. Choose from a multitude of available colors or mix and match different profiles to create the perfect look for your project with our universal carrier system. Select a curved carrier or play it straight. Our linear ceilings give you the freedom to create, whatever your project needs.

*Left: Chanhassen High School, Chanhassen, MN
Architect: Perkins + Will Architects
Product: Woodwright™ Box Series
Photo Credit: Bob Perzel*

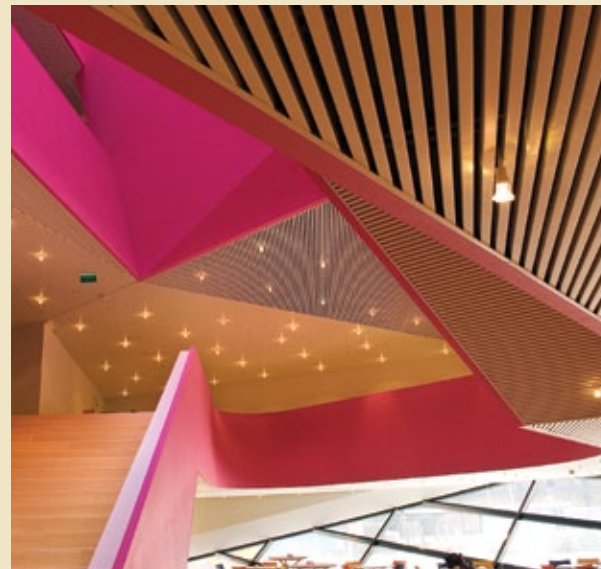
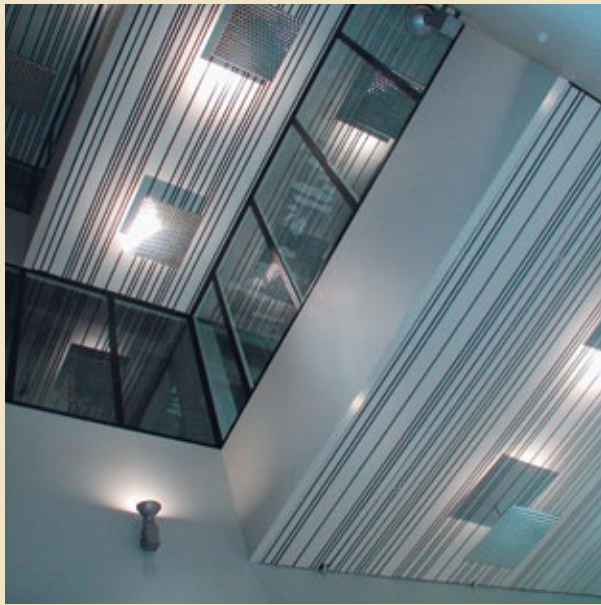
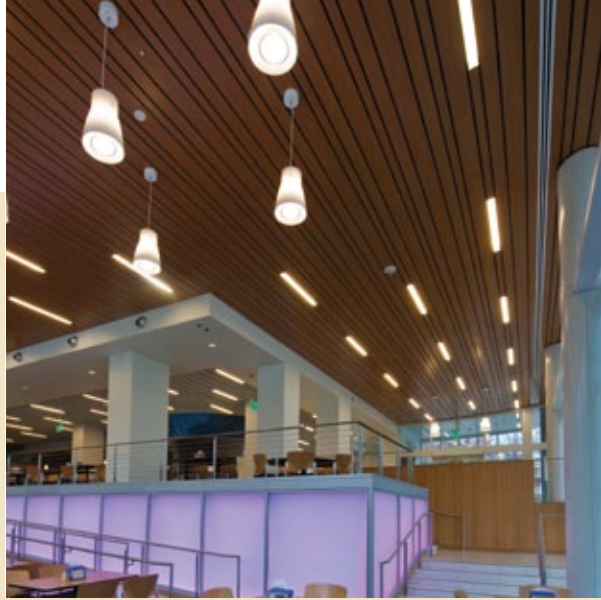
*Below: BART Station, San Francisco, CA
Architect: ED2 International
Product: Box 6, color: Natural*



Right, Top to Bottom:
Georgia Tech North Ave. Dining Hall, Atlanta, GA
Architect: Menefee+Winer
Product: Woodwright™ Multi-Box Series
Photo Credit: Bob Perzel

Fatbursjon, Stockholm, Sweden
Architect: Gert Wingardh
Product: Multi-Box Series

Agora Theatre, Lelystad, Netherlands
Architect: UNStudio, Ben van Berkel
Product: Deep Box Series





Take it outside.

Left to Right:

St. Luke's Professional Building, Houston, TX

Architect: Cesar Pelli & Associates

Product: Snap-In Tile, custom color: Taupe

Luxury Auto Mall, Tucson, AZ

Architect: Barry R. Barcus Architect, Inc.

Product: 300C – Exterior

Photo Credit: Bob Perzel

PHX Sky Train™, Phoenix, AZ

Architect: HOK

Product: 300C - Exterior

Photo Credit: Bob Perzel

Why keep your vision locked inside? Bring style outdoors with our Exterior Soffit ceilings. These products create a variety of distinct looks and are engineered to withstand various environmental conditions. Perfect for canopies and porte-cocheres, our Linear, Plank and Linear Plank systems are all available for exterior usage.



The great wide open.

Our Open Cell ceilings provide the widest selection of patterns, configurations, and colors, inviting you to exercise your creativity. Both our Open Cell and larger Cell Frame ceilings offer a clean fit, establishing a monolithic visual plane. In addition, our Cell ceilings provide access to lighting, ventilation systems, audio, security and sprinklers, ensuring form doesn't get in the way of function.



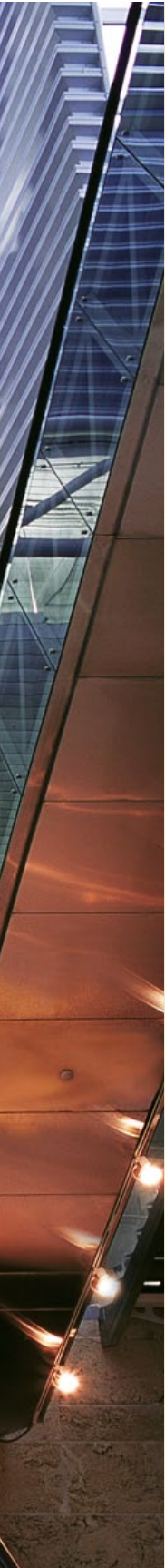


Above: Metro Station Warsaw Centrum, Warsaw, Poland
Architect: Mostostal
Product: Open Cell

Left: National Center for Aviation Training (NCAT), Wichita, KS
Architect: Schaefer Johnson Cox Frey
Product: Open Cell

Far Left: 7th Street Parking Garage, Minneapolis, MN
Architect: Stageberg Beyer Sachs
Product: Open Cell, color: Gloss Blue





Above: A&P, Park Ridge, NJ
Architect: Studio 5 Partnership, Architects/Planners LLC
Product: Woodwright™ Beams
Photo Credit: Mark Bealer

Left: Ft. Lauderdale Airport, Ft. Lauderdale, FL
Architect: HOK
Product: Metal Screen/Baffle

Right: Lynnhaven Mall, Lynnhaven, VA
Architect: Copeland, Novak & Israel
Product: Metal Screen/Baffle



Get baffled.

Luxalon® Baffle ceilings emphasize versatility. Our adjustable carrier allows baffles to slide back for easy access to lighting, sprinklers, and diffusers. Use baffle ceilings as a one-way plenum mask or to create interesting lighting effects. Utilize baffle on its own or incorporate other Luxalon metal ceilings in adjoining areas for a comprehensive design.

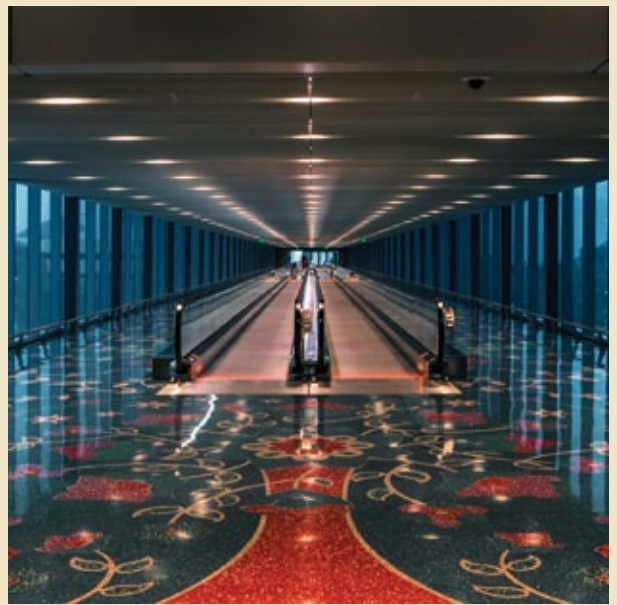
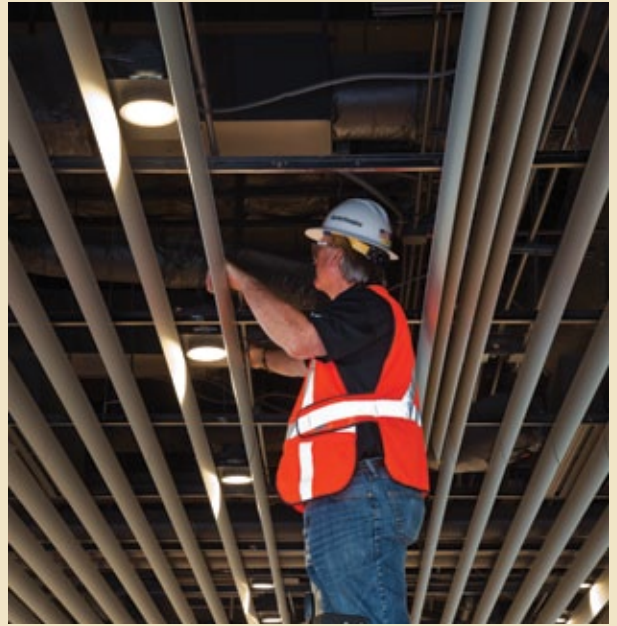
BAFFLE

Reach new heights.

The robust and precise extruded aluminum High Profile Series™ baffle ceiling system offers easy ceiling access and flexible, customizable designs and finishes including powder-coating, anodized and real wood veneer. Created for indoor commercial applications, this system works well for convention center, airport, stadium, casino, and arena ceilings, as well as corporate, hospitality, healthcare, and retail settings.

*All Images: PHX Sky Train™, Phoenix, AZ
Architect: HOK
Product: High Profile Series
Photo Credit: Bob Perzel*





Large Photo, Right:
L.B. Landry High School, New Orleans, LA
Architect: Eskew+Dumez+Ripple
Product: Hook-On
Photo Credit: Tim Hursley



Above, Left to Right:
Georgia Tech Clough Commons, Atlanta, GA
Architect: Bohlin Cywinski Jackson
Product: Hook-On
Photo Credit: Bob Perzel

Georgia Tech Clough Commons, Atlanta, GA
Architect: Bohlin Cywinski Jackson
Product: Mesh Metal Ceilings
Photo Credit: Bob Perzel

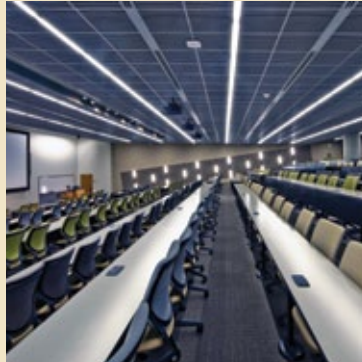
L.B. Landry High School, New Orleans, LA
Architect: Eskew+Dumez+Ripple
Product: Tubrise – Exterior Screens
Photo Credit: Tim Hursley

Cover: L.B. Landry High School, New Orleans, LA
Architect: Eskew+Dumez+Ripple
Product: Hook-On
Photo Credit: Tim Hursley



LUXALON CEILINGS' ENVIRONMENTAL BENEFITS

- Panels contain up to 95% recycled content
- Durable panels ensure long product lifespan and maximize sustainability
- 100% recyclable
- No VOC's (Volatile Organic Compounds), preserves IAQ (indoor air quality)
- GREENGUARD Gold Certified



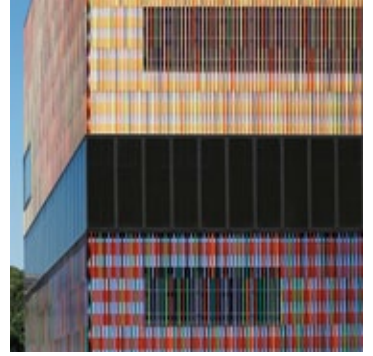
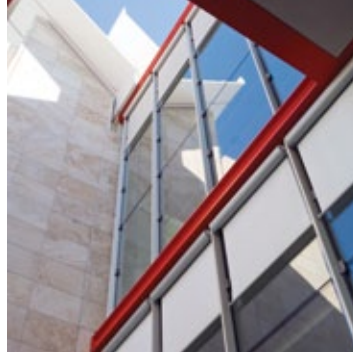
For the last 60 years, we've worked alongside the architecture and design community, creating some of the world's most recognizable projects. We're continually striving to fulfill the needs of architects and designers with products that meet the highest standards. Our Luxalon® Metal Ceilings have been developed to assist the architects of today in designing the projects of tomorrow.

Learn More

- Call 800.366.4327 to speak with a customer service specialist
- Visit www.hunterdouglascontract.com/ceilings


HunterDouglasContract

WINDOW COVERINGS	CEILINGS	SOLAR CONTROL	FAÇADES
------------------	----------	---------------	---------



Hunter Douglas Contract
5015 Oakbrook Parkway, Suite 100
Norcross, GA 30093
Phone: 800.366.4327
Fax: 770.806.0214
www.hunterdouglascontract.com/ceilings

© 2013 Hunter Douglas. All rights reserved. All trademarks used herein are the property of their respective owners.

 This brochure was printed using recycled paper.